



CITY OF
Crystal Lake
ILLINOIS

Stormwater Solutions & Stakeholder Engagement

Stormwater Solutions & Stakeholder Engagement

Outline

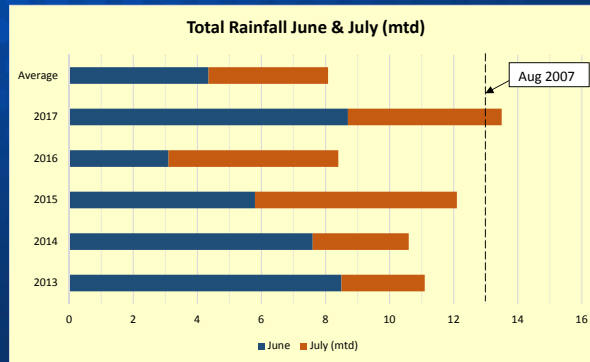
- Recent storm events and impacts
- City funded projects and studies
- Stakeholder engagement process
- Product: prioritized list of projects, costs & funding alternatives



CITY OF
Crystal Lake
ILLINOIS

Stormwater Solutions & Stakeholder Engagement

- Recent *successive* and high rainfall events



- Impacted areas rely on surface drainage (ditches and overland flow). Many of these neighborhoods were built before modern stormwater requirements (detention/retention).



CITY OF
Crystal Lake
ILLINOIS

Stormwater Solutions & Stakeholder Engagement

Flooding and Ponding Observations

- Roadway and parkway flooding that subsides after the event (includes some yards and parking lots)
- FEMA Floodplains
- Pocketed areas with high groundwater (low spots with no outlets). Duration and extent varies
- Private stormwater facilities

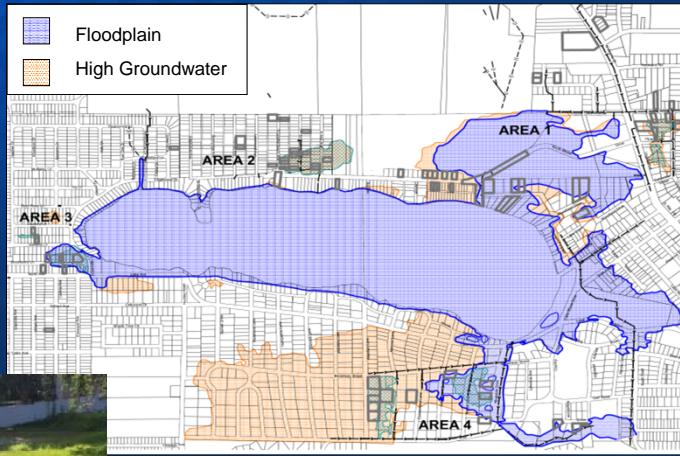


CITY OF
Crystal Lake
ILLINOIS

Stormwater Solutions & Stakeholder Engagement

Many areas with surface flooding (beyond 5 days) are within 2 feet of the Lake surface and have high groundwater.

- North Shore area
- Woodland Dr.
- Pine St./ Oriole Tr.
- West end of Lake
- Crystal Creek (Country Club area)

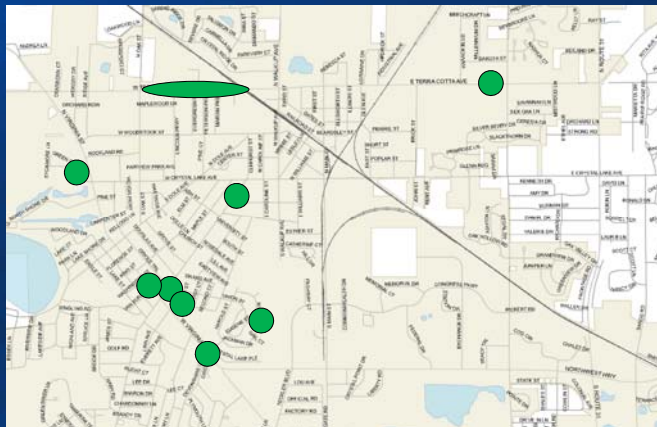


CITY OF
Crystal Lake
ILLINOIS

Stormwater Solutions & Stakeholder Engagement

Areas with repeated flooding (road closures) that subside include:

- Green Oaks Dr.
- US-14/Keith Ave.
- College St./Uteg St.
- Mary Ln./ Union St.
- McHenry Ave./Oriole
- McHenry Ave./Library
- Washington/Pierson-Van Buren
- IL 176/Terra Cotta
- IL 176 (Oak to Walkup)



CITY OF
Crystal Lake
ILLINOIS

Stormwater Solutions & Stakeholder Engagement

City funded drainage investments

Initiative (public health)	Cost
North Shore sanitary sewers and water (failing septic) (City portion of project)	\$518,015

Initiative (emergency access and flooding)	Cost
2009 Flooding Study	\$33,272
Crystal Creek Study	\$35,547
North Shore Culvert Project Study	\$46,958
North Shore Culvert Design	\$110,410
North Shore Construction (Cove Pond overflow, roadway & Oak Ct. area)	\$761,992
Lake Modeling (Crystal Creek)	\$26,798
North Shore Area 2 Design Engineering	\$63,628
TOTAL =	\$1,078,605



Stormwater Solutions & Stakeholder Engagement

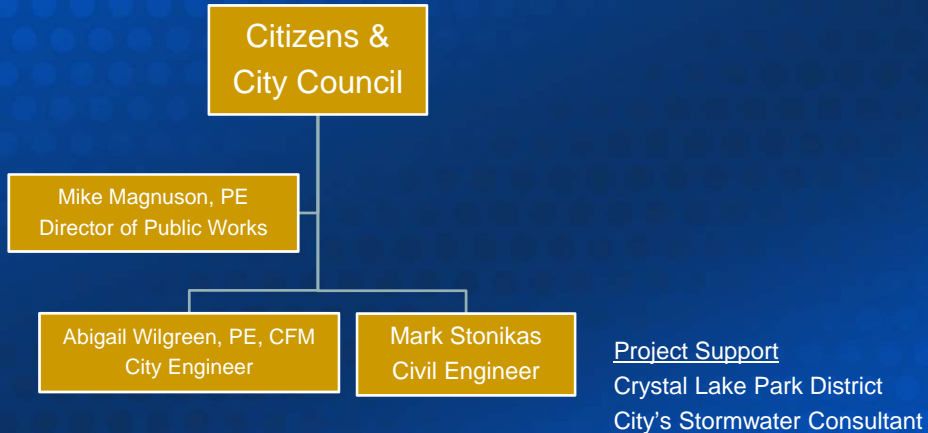
What are we proposing to accomplish?

- **Stakeholder/ Neighborhood Meetings (area specific)**
July – October
North Shore Area Advisory Committee (need consensus)
- **Prioritization of Projects, Costs & Funding Alternatives**
(benefit/cost, impacts, and acceptance)
October - November
- **Projects will require a partnership**



Stormwater Solutions & Stakeholder Engagement

Project Study Team



Stormwater Solutions & Stakeholder Engagement

Transparent and Open Process

- Dedicated section on the City website (2 weeks)
(studies, updates, meetings, resources, etc.)
- Neighborhood and Advisory Committee Meetings
(open to all)
- Regular City Council Updates



Stormwater Solutions & Stakeholder Engagement

Questions?

Mike Magnuson, PE
Director of Public Works
815-356-3611
mmagnuson@crystallake.org



Stormwater Solutions & Stakeholder Engagement

