

Final Check-In



CITY OF
Crystal Lake
ILLINOIS

Crystal Vista & Crystal Gardens Study Areas 2/8/2018

Stormwater Solutions & Stakeholder Engagement

Stormwater Solutions & Stakeholder Engagement

Final Check-In

- Prioritization of Projects
- Proposed Near-Term & Mid-Term Improvements
- Proposed Down-Stream Improvement Concepts
- Next Steps
- Other Efforts

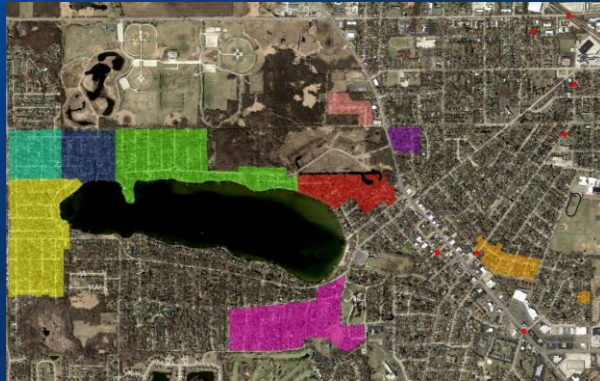


CITY OF
Crystal Lake
ILLINOIS

Stormwater Solutions & Stakeholder Engagement

Prioritization of Projects

- Nine Study Areas with a Large Variety of Impacts
- Flooding, regardless of volume, impacts property owners personally



CITY OF
Crystal Lake
ILLINOIS

Stormwater Solutions & Stakeholder Engagement

Prioritization of Projects

- Staff is prioritizing projects that:
 - Alleviate flooding that impacts structures (homes, garages, crawl spaces, basements)
 - Alleviate significant flooding from roadways that impact properties
 - Provide mechanism for relief of significant flooding on properties (impassible – several feet deep)
 - Some projects must be built first to allow for other projects
 - Regulatory approvals take time (US Army Corps of Engineers, IDNR, EPA, etc.)



CITY OF
Crystal Lake
ILLINOIS

Stormwater Solutions & Stakeholder Engagement

Types of Projects

- Public Improvements on Public Property
(include roadway R.O.W. or easements)
- Connections from private property for private property flooding are the responsibility of the owner
- Short-term, mid-term and long-term projects



CITY OF
Crystal Lake
ILLINOIS

Stormwater Solutions & Stakeholder Engagement

Proposed Near-Term Improvements

- 1. Park District Project (Lippold Park north of Thornwood)**
Engineering underway, construction 2018/19
- 2. Honeysuckle Storm Sewer Improvement**
2018-2019 construction
- 3. Gardina Vista Storm Sewer**
2018-2019 construction



CITY OF
Crystal Lake
ILLINOIS

Crystal Lake
Drainage District
Old Field Tiles

✓ ✓ ✓ ✓

Could not find

CITY OF
Crystal Lake
ILLINOIS

This slide features an aerial photograph of a drainage district area. A network of green lines represents old field tiles, with several yellow checkmarks indicating successful findings. A pink line runs vertically through the lower portion of the map, and a red dashed line is visible near a building. A white box with the text 'Could not find' is positioned near the top right. The right side of the slide has a blue background with the title 'Crystal Lake Drainage District Old Field Tiles' and the City of Crystal Lake logo at the bottom.

Crystal Lake
Drainage District
Old Field Tiles

✓ ✓ ✓ ✓

Could not find

1 2

CITY OF
Crystal Lake
ILLINOIS

This slide is identical to the one above but includes two additional orange circles with the numbers '1' and '2' placed near the pink vertical line in the lower-left quadrant of the map. The rest of the slide, including the title, checkmarks, 'Could not find' label, and logo, remains the same.

Stormwater Solutions & Stakeholder Engagement

Proposed Near-Term Improvements

- 1 Park District Project (Lippold Park north of Thornwood)
Engineering underway, construction 2018/19

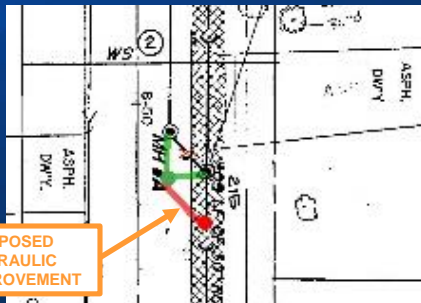


CITY OF
Crystal Lake
ILLINOIS

Stormwater Solutions & Stakeholder Engagement

Proposed Near-Term Improvements 2018/2019

- 2 Honeysuckle Storm Sewer Improvement
(2018-2019 construction)

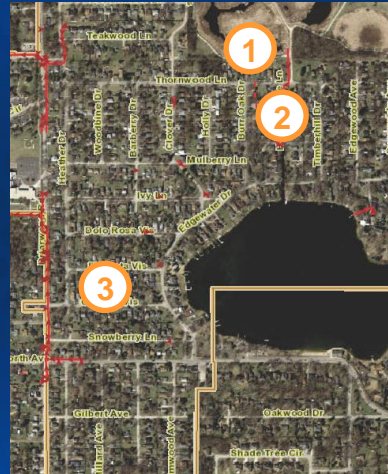


CITY OF
Crystal Lake
ILLINOIS

Stormwater Solutions & Stakeholder Engagement

Proposed Near-Term Improvements (2018/2019)

3 Gardina Vista Storm Sewer

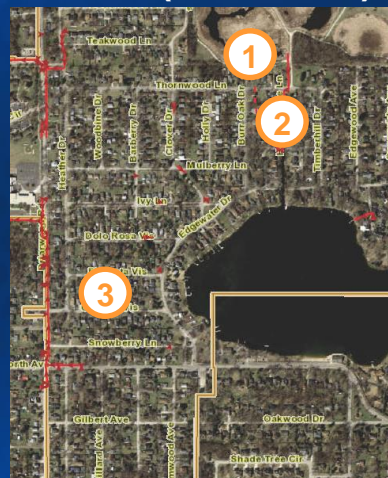
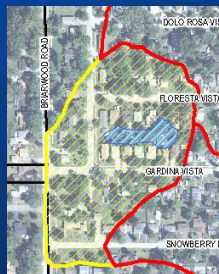


CITY OF
Crystal Lake
ILLINOIS

Stormwater Solutions & Stakeholder Engagement

Proposed Near-Term Improvements (2018/2019)

3 Gardina Vista Storm Sewer



CITY OF
Crystal Lake
ILLINOIS

Stormwater Solutions & Stakeholder Engagement

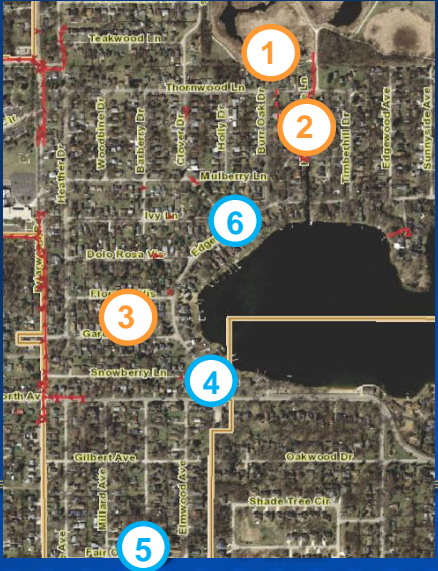
CONSENSUS?



Stormwater Solutions & Stakeholder Engagement

Proposed Mid-Term Improvements (Next 5 Years)

- 4 Edgewater Storage/ Regrade Kamijima Park
- 5 Fair Oaks/Corrine Storage & Rain Garden
- 6 Edgewater/Clover Storage & Raingarden
- 7 Preliminary Engineering Only to retrofit area-wide roadway drainage



Stormwater Solutions & Stakeholder Engagement

Proposed Down-Stream Concepts (Multi-Year Effort)

1. Replace and upgrade (100 yr. design) culverts under Broadway, Country Club Rd. Barlina Ave., McHenry Ave., Dartmoor Dr.
2. “Open up” Crystal Creek south of the Country Club and replace and upgrade culverts under St. Andrews.
3. Lake Level Study

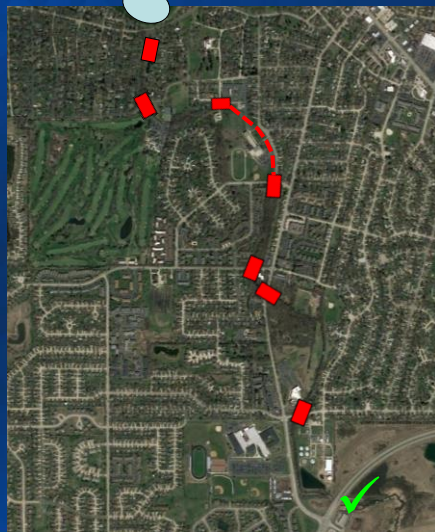


CITY OF
Crystal Lake
ILLINOIS

Stormwater Solutions & Stakeholder Engagement

Proposed Down-Stream Concepts (Multi-Year Effort)

Lake/Creek Study then seek
IEPA Section 319 grant for
“opening” of creek



CITY OF
Crystal Lake
ILLINOIS

Stormwater Solutions & Stakeholder Engagement

Next Steps



- Prioritize Projects (impacts and implementation schedule)
- Distribute to City Council
- City budget approval (Fiscal Year starts 5/1/2018)
- Enhanced permitting requirements (Spring 2018)



CITY OF
Crystal Lake
ILLINOIS

Stormwater Solutions & Stakeholder Engagement

Sanitary Sewer Improvements

- Lining and Grouting (multi-year effort)



CITY OF
Crystal Lake
ILLINOIS

Stormwater Solutions & Stakeholder Engagement

Sanitary Sewer Improvements

- Overhead Sewer Program (7 left)



Stormwater Solutions & Stakeholder Engagement

Sanitary Sewer Improvements

- Overhead Sewer Program (7 left)



Stormwater Solutions & Stakeholder Engagement

Sanitary Sewer Improvements

- Overhead Sewer Program (7 left)

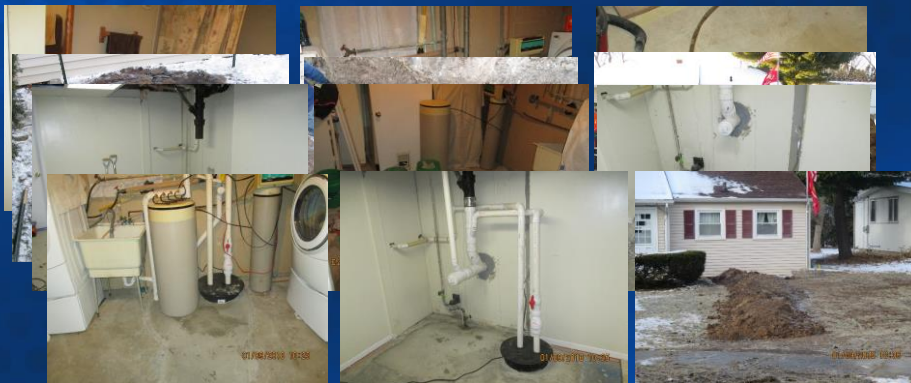


CITY OF
Crystal Lake
ILLINOIS

Stormwater Solutions & Stakeholder Engagement

Sanitary Sewer Improvements

- Overhead Sewer Program (7 left)



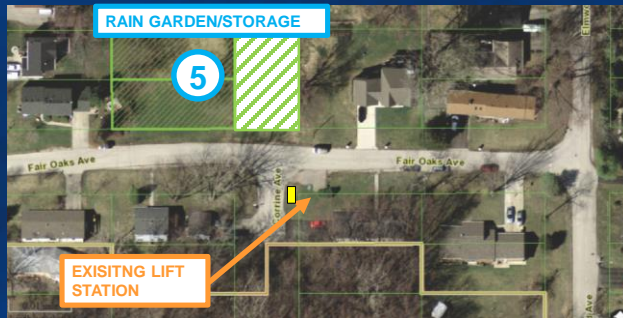
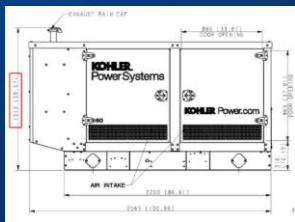
CITY OF
Crystal Lake
ILLINOIS

Stormwater Solutions & Stakeholder Engagement

Lift Station Improvements

Emergency Generator for Fair Oaks Lift Station (2018)

- Weekly testing (during day) and in emergencies
- Landscaping of Generator (approx. 90”L x 40”W x 60”H)



CITY OF
Crystal Lake
ILLINOIS

Stormwater Solutions & Stakeholder Engagement

Other Efforts

- Enhancements to permit process (Spring 2018)
- Review of historical data & aerials



CITY OF
Crystal Lake
ILLINOIS