

Final Landscape Plan

WOODLORE ESTATES

Crystal Lake, Illinois

August 10, 2018

CONSULTANTS:



LANDSCAPE ARCHITECT:
 GARY R. WEBER ASSOCIATES, INC
 212 SOUTH MAIN STREET
 WHEATON, ILLINOIS 60187



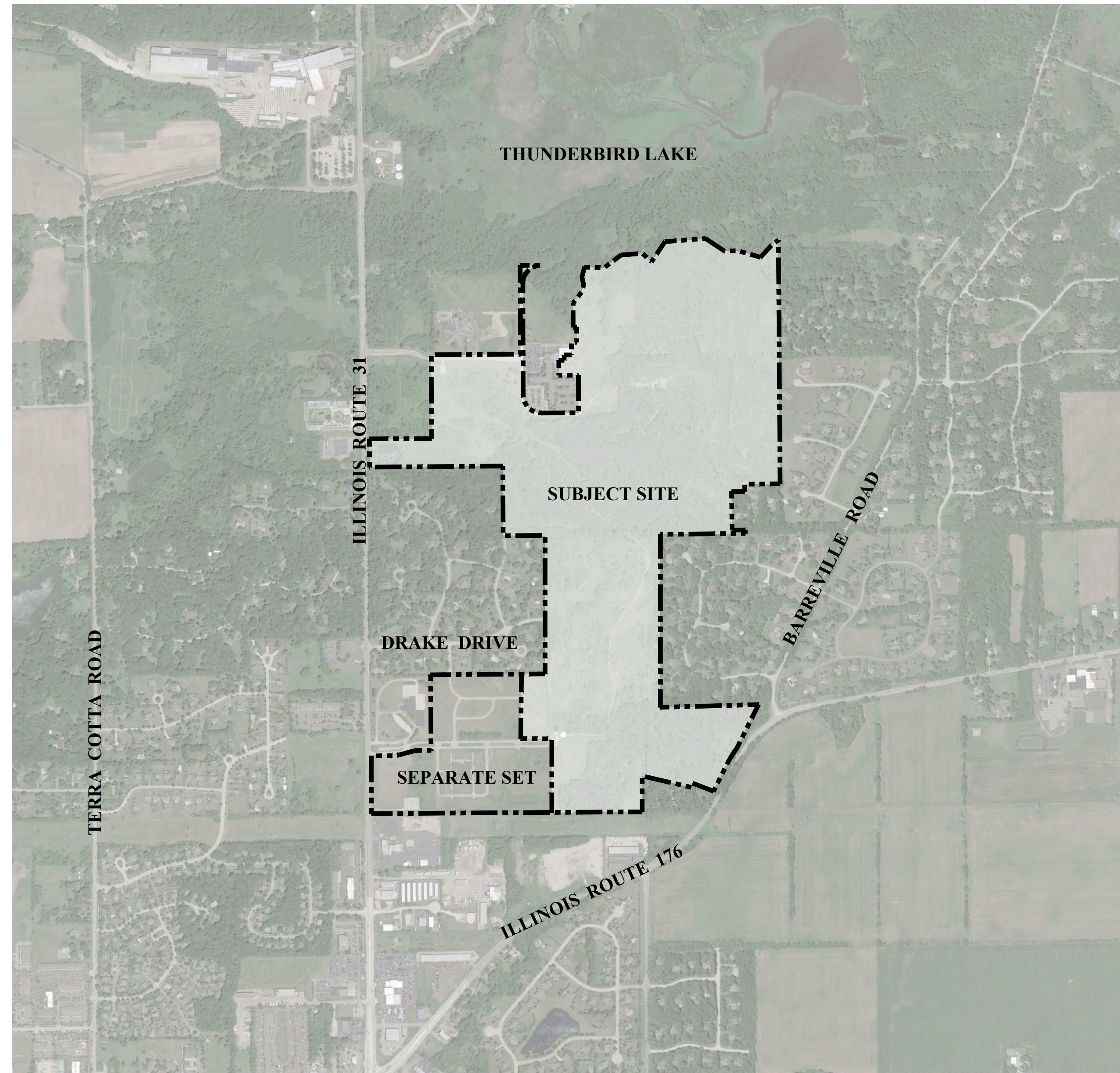
CIVIL ENGINEER:
 MACKIE CONSULTANTS, LLC.
 9575 WEST HIGGINS ROAD, SUITE 500
 ROSEMONT, ILLINOIS 60018

ECOLOGICAL:

MIDWEST ECOLOGICAL, INC
 PO BOX 321
 GILBERTS, ILLINOIS 60136

FORESTRY:

URBAN FOREST MANAGEMENT, INC.
 960 ROUTE 22, SUITE 207
 FOX RIVER GROVE, ILLINOIS 60021



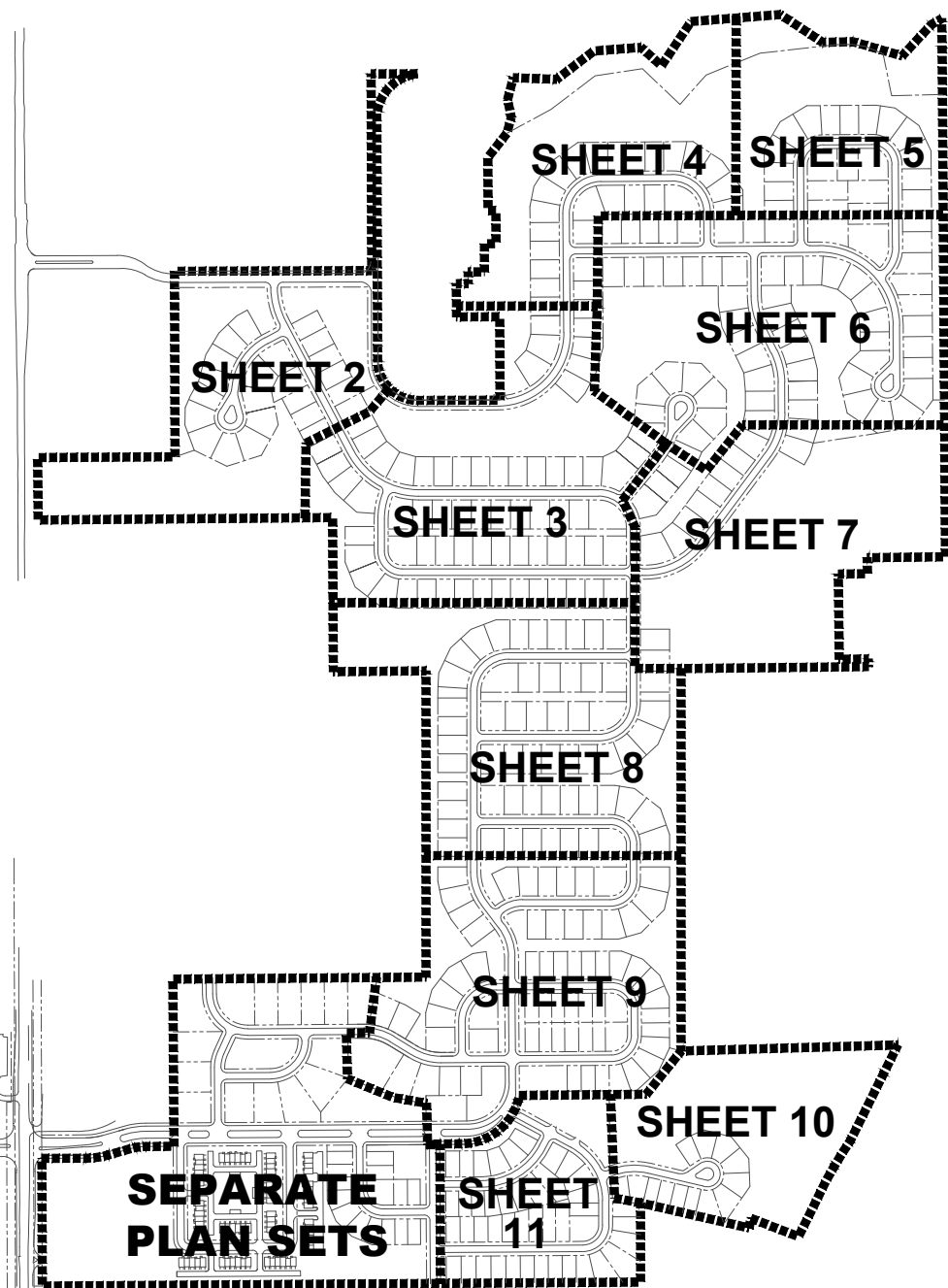
LOCATION MAP

SCALE: 1"=800'

INDEX OF SHEETS

SHEET NO.	DESCRIPTION
0	COVER SHEET
1	OVERALL LANDSCAPE PLAN
2	LANDSCAPE PLAN
3	LANDSCAPE PLAN
4	LANDSCAPE PLAN
5	LANDSCAPE PLAN
6	LANDSCAPE PLAN
7	LANDSCAPE PLAN
8	LANDSCAPE PLAN
9	LANDSCAPE PLAN
10	LANDSCAPE PLAN
11	LANDSCAPE PLAN
12	LANDSCAPE DETAILS
13	LANDSCAPE DETAILS
14	SEEDING PLAN
15	SEEDING PLAN
16	WOODLAND MANAGEMENT PLAN
17	MONUMENT LAYOUT PLANS
18	MONUMENT DETAILS
19	LANDSCAPE SPECIFICATIONS
20	LANDSCAPE SPECIFICATIONS
21	WOODLAND MANAGEMENT SPECIFICATIONS





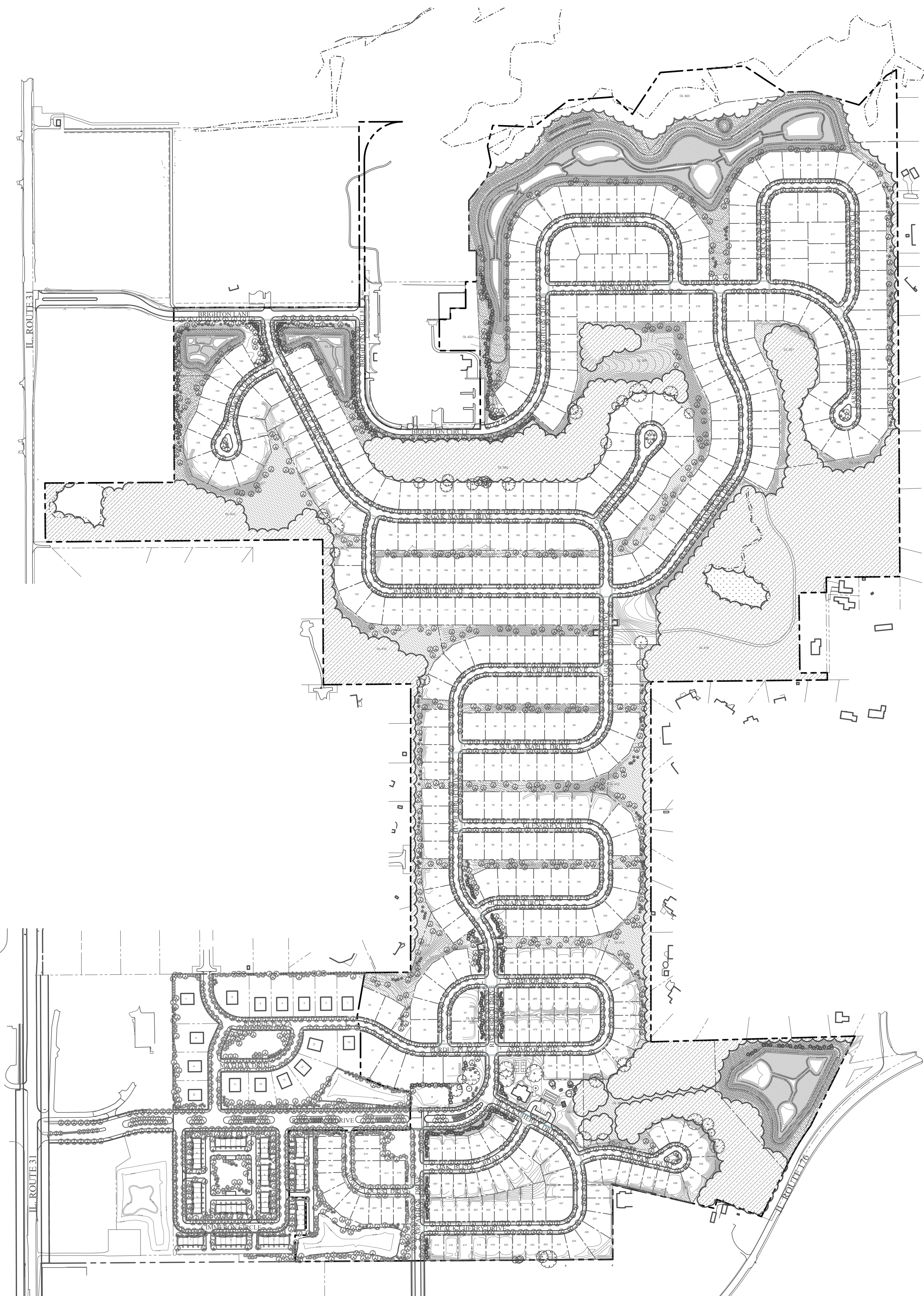
SHEET KEY MAP
NOT TO SCALE

PLANT LIST

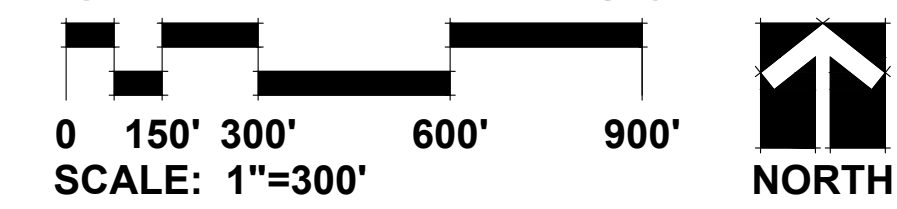
Key	Qty.	Botanical/Common Name	Size	Remarks	Key	Qty.	Botanical/Common Name	Size	Remarks
SHADE TREES									
AA	41	Acer x freemanii 'Jeffers' Red' AUTUMN BLAZE FREEMAN MAPLE	3" Cal.		SR	26	Syringa reticulata 'Ivory Silk' IVORY SILK JAPANESE TREE LILAC	8' Ht.	Multi-Stem
AF	73	Acer x freemanii 'Marmo' MARMO FREEMAN MAPLE	2 1/2" Cal.		SP	15	Syringa pekinensis 'Zhing Zhiming' BEIJING GOLD PEKING LILAC	10' Ht.	Multi-Stem
AF4	4	Acer x freemanii 'Marmo' MARMO FREEMAN MAPLE	4" Cal.		EVERGREEN TREES				
AM	65	Acer miyabei 'Morton' STATE STREET MAPLE	2 1/2" Cal.		AC	39	Abies concolor WHITE FIR	8' Ht.	
AS	38	Acer saccharum 'Green Mountain' GREEN MOUNTAIN SUGAR MAPLE	3" Cal.		PG	37	Picea glauca 'Densata' BLACK HILLS SPRUCE	8' Ht.	
CE	50	Celtis occidentalis COMMON HACKBERRY	2 1/2" Cal.		PG12	18	Picea glauca 'Densata' BLACK HILLS SPRUCE	12' Ht.	
CO	61	Celtis occidentalis 'Chicagoland' CHICAGOLAND HACKBERRY	2 1/2" Cal.		PN	30	Picea abies NORWAY SPRUCE	8' Ht.	
GT	85	Gleditsia triacanthos var. inermis 'Skycoke' SKYLINE HONEYLOCUST	2 1/2" Cal.		PO	44	Picea omorika SERBIAN SPRUCE	8' Ht.	
GD	80	Gymnocladus dioica 'Espresso-JFS' ESPRESSO KENTUCKY COFFEETREE	2 1/2" Cal.		PP	40	Picea pungens GREEN COLORADO SPRUCE	8' Ht.	
LT	87	Liriodendron tulipifera TULIPTREE	2 1/2" Cal.		PS	43	Pinus strobus WHITE PINE	8' Ht.	
PA	92	Platanus x acerifolia 'Morton Circle' EXCLAMATION LONDON PLANETREE	2 1/2" Cal.		DECIDUOUS SHRUBS				
PAB	14	Platanus x acerifolia 'Morton Circle' EXCLAMATION LONDON PLANETREE	3" Cal.		CS	46	Cornus sericea 'Farrow' ARCTIC FIRE RED-OSIER DOGWOOD	24" Tall	3' O.C.
QA	64	Quercus alba WHITE OAK	3" Cal.		CI	47	Cornus sericea 'Isanti' ISANTI RED-OSIER DOGWOOD	30" Tall	4' O.C.
QB	60	Quercus bicolor SWAMP WHITE OAK	2 1/2" Cal.		HM	56	Hydrangea macrophylla 'Bailmer' ENDLESS SUMMER HYDRANGEA	24" Tall	3' O.C.
QI	58	Quercus imbricaria SHINGLE OAK	3" Cal.		SM	52	Syringa patula 'Miss Kim' MISS KIM LILAC	30" Tall	4' O.C.
QM	67	Quercus macrocarpa BUR OAK	3" Cal.		VJ	136	Viburnum x juddii JUDD VIBURNUM	30" Tall	4' O.C.
QU	59	Quercus muehlenbergii CHINGUAPIN OAK	3" Cal.		WF	48	Weigela florida 'Bokrasopin' PINK SONIC BOOM WEIGELA	24" Tall	4' O.C.
QR	67	Quercus rubra RED OAK	3" Cal.		EVERGREEN SHRUBS				
TA	85	Tilia americana 'Redmond' REDMOND AMERICAN LINDEN	2 1/2" Cal.		JS	64	Juniperus chinensis 'Seagreen' SEAGREEN JUNIPER	30" Wide	4' O.C.
TC	83	Tilia cordata 'Greenspire' GREENSPIRE LITTLELEAF LINDEN	2 1/2" Cal.		JK	200	Juniperus chinensis 'Kallay's Compact' KALLAY'S COMPACT PFITZER JUNIPER	24" Wide	4' O.C.
TT	80	Tilia tomentosa 'Sterling' STERLING SILVER LINDEN	2 1/2" Cal.		JC	43	Juniperus conferta 'Blue Pacific' BLUE PACIFIC JUNIPER	24" Wide	3.5' O.C.
UM	34	Ulmus 'Morton' ACCOLADE ELM	3" Cal.		PERENNIALS				
UM4	6	Ulmus 'Morton' ACCOLADE ELM	4" Cal.		AB	43	Allium 'Summer Beauty' SUMMER BEAUTY ONION	#1	18" O.C.
UG	89	Ulmus 'Morton Glossy' TRIUMPH ELM	2 1/2" Cal.		EC	48	Echinacea 'CBG Cone 2' PIXIE MEADOWBRITE CONEFLOWER	#1	18" O.C.
UC	77	Ulmus carpinifolia 'Frontier' FRONTIER SMOOTHLEAF ELM	2 1/2" Cal.		HH	240	Hemerocallis 'Happy Returns' HAPPY RETURNS DAYLILY	#1	18" O.C.
ORNAMENTAL TREES									
AG	40	Amelanchier x grandiflora APPLE SERVICEBERRY	8' Ht.	Multi-Stem	HL	130	Hemerocallis 'Little Wine Cup' LITTLE WINE CUP DAYLILY	#1	18" O.C.
BN	52	Betula nigra 'Cully' HERITAGE RIVER BIRCH	8' Ht.	Multi-Stem	ORNAMENTAL GRASSES				
CC	53	Cercis canadensis EASTERN REDBUD	8' Ht.	Multi-Stem	CK	217	Calamagrostis x acutiflora 'Karl Foerster' FEATHER REED GRASS	#1	30' O.C.
CA	25	Cornus alternifolia PAGODA DOGWOOD	8' Ht.	Multi-Stem	PV	131	Panicum virgatum 'Rotstrahlbusch' RED SWITCHGRASS	#3	30' O.C.
CF	46	Cornus florida FLOWERING DOGWOOD	8' Ht.	Multi-Stem	SH	541	Sporobolus heterolepis PRAIRIE DROPSEED	#1	24' O.C.
CM	26	Cornus mas CORNELIANCHERRY DOGWOOD	8' Ht.	Multi-Stem	MISC. MATERIALS				
MP	30	Malus 'Prairifire' PRAIRIFIRE CRABAPPLE	8' Ht.	Multi-Stem		664	Shredded Hardwood Bark Mulch	C.Y.	
						51,933	Sod	S.Y.	
						1.85	Turf Seed & Erosion Control Blanket	AC.	

GENERAL NOTES

- Contractor shall verify underground utility lines and is responsible for any damage.
- Contractor shall verify all existing conditions in the field prior to construction and shall notify landscape architect of any variance.
- Material quantities shown are for contractors convenience only. The Contractor must verify all material and supply sufficient materials to complete the job per plan.
- The landscape architect reserves the right to inspect trees and shrubs either at place of growth or at site before planting, for compliance with requirements of variety, size and quality.
- Work shall conform to American Standard for Nursery Stock, State of Illinois Horticultural Standards, and Local Municipal requirements.
- Contractor shall secure and pay for all permits, fees, and inspections necessary for the proper execution of this work and comply with all codes applicable to this work.
- See General Conditions and Specifications for landscape work for additional requirements.
- Landscape Plan shows details & locations for seat walls & raised planters, all other walls are specified on engineering plans.
- All parkway trees shall be planted at least 25 feet from any light pole, 5 feet from manholes and b-boxes, and 15 feet from any stop signs.



OVERALL LANDSCAPE PLAN



GRWA
GARY R. WEBER ASSOCIATES, INC.
LAND PLANNING
ECOLOGICAL CONSULTING
LANDSCAPE ARCHITECTURE
212 SOUTH MAIN STREET
WHEATON, ILLINOIS 60187
PHONE: 630-668-7197

CLIENT
LENNAR
1141 E. MAIN STREET
SUITE 108
EAST DUNDEE, ILLINOIS 60118

ENGINEER
MACKIE CONSULTANTS, LLC
9575 W. HIGGINS ROAD
SUITE 500
ROSEMONT, IL 60018

ECOLOGICAL
MIDWEST ECOLOGICAL, INC.
P.O. BOX 321
GILBERTS, ILLINOIS 60136

FORESTRY
URBAN FOREST MANAGEMENT, INC.
960 ROUTE 22, SUITE 207
FOX RIVER GROVE, ILLINOIS 60021

WOODLORE ESTATES
CRYSTAL LAKE, ILLINOIS
OVERALL LANDSCAPE PLAN

2	8.10.18
1 - FOR BID	6.18.18
REVISIONS	

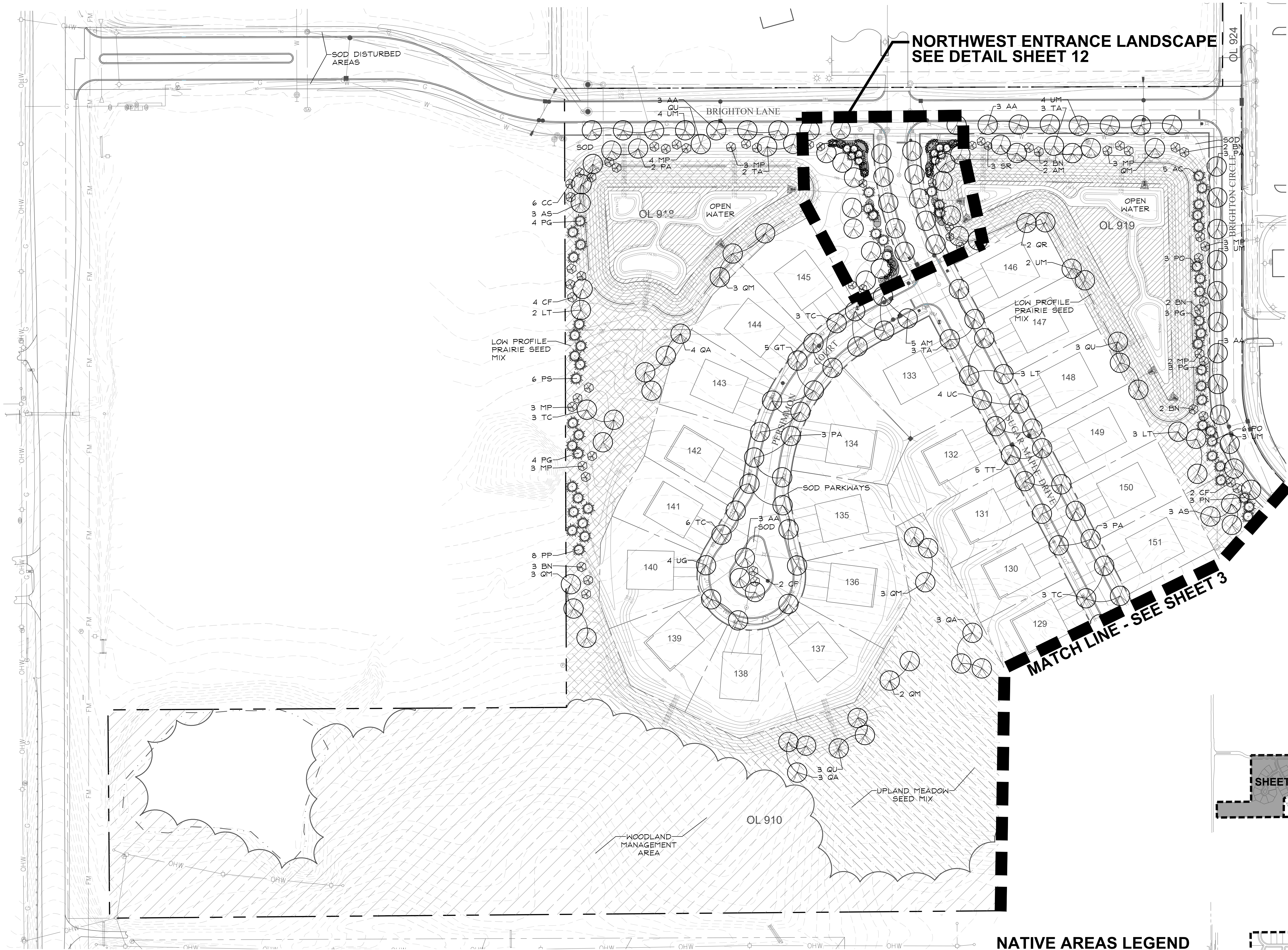
DATE	6.11.18
PROJECT NO.	CA1624
DRAWN	GFB
CHECKED	MGM
SHEET NO.	



GARY R. WEBER
ASSOCIATES, INC.
LAND PLANNING
ECOLOGICAL CONSULTING
LANDSCAPE ARCHITECTURE
212 SOUTH MAIN STREET
WHEATON, ILLINOIS 60187
PHONE: 630-668-7197

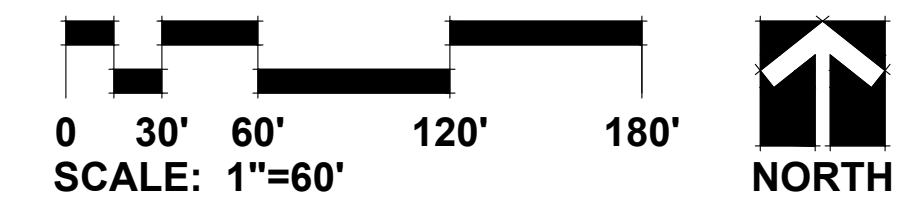
CLIENT
LENNAR
1141 E. MAIN STREET
SUITE 108
EAST DUNDEE, ILLINOIS 60118
ENGINEER
MACKIE CONSULTANTS, LLC
9575 W. HIGGINS ROAD
SUITE 500
ROSEMONT, IL 60018
ECOLOGICAL
MIDWEST ECOLOGICAL, INC.
P.O. BOX 321
GILBERTS, ILLINOIS 60136
FORESTRY
URBAN FOREST MANAGEMENT, INC.
960 ROUTE 22, SUITE 207
FOX RIVER GROVE, ILLINOIS 60021

WOODLORE ESTATES
CRYSTAL LAKE, ILLINOIS
LANDSCAPE PLAN



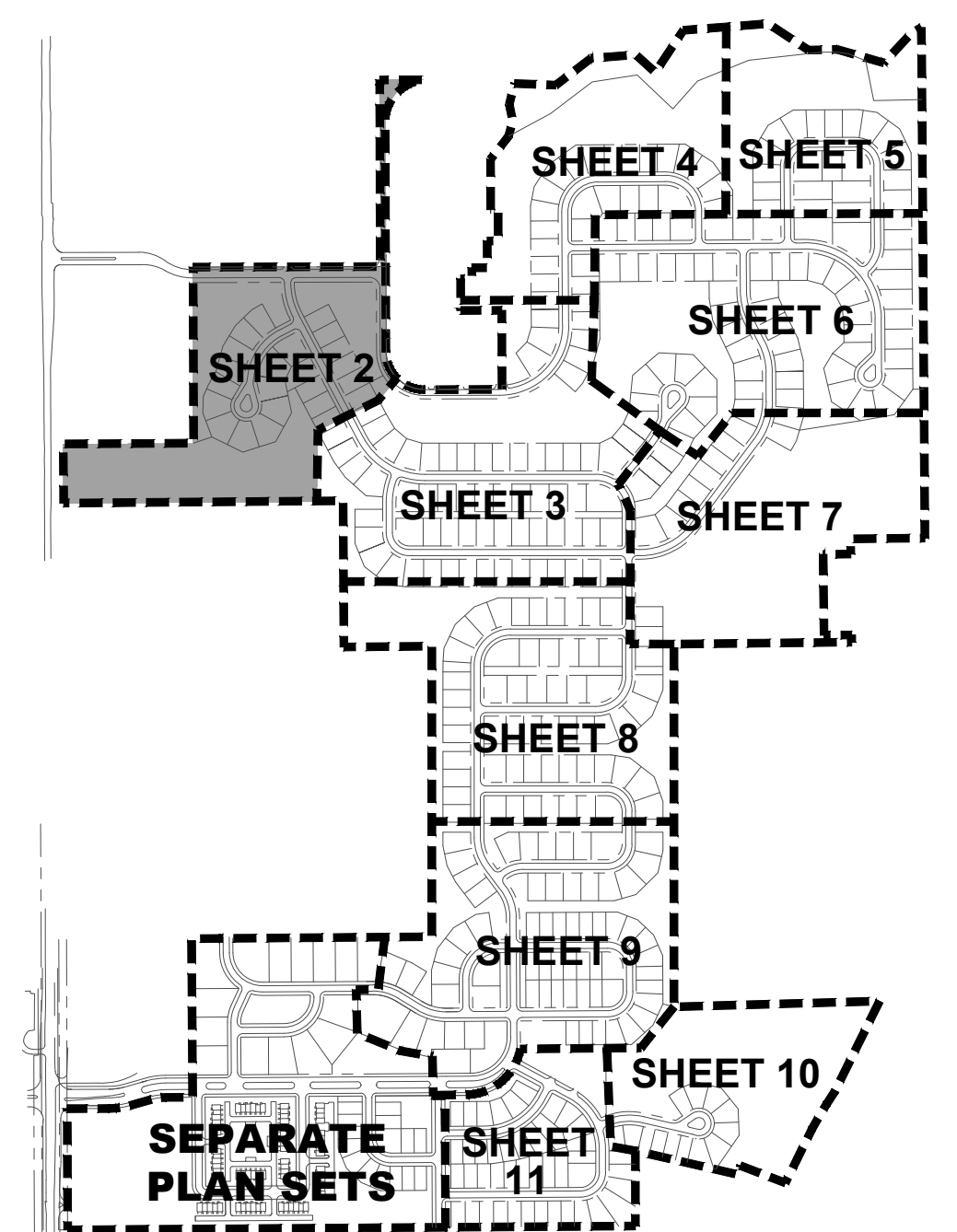
NORTHWEST ENTRANCE LANDSCAPE
SEE DETAIL SHEET 12

MATCH LINE - SEE SHEET 3



NATIVE AREAS LEGEND

Key	Description
	EMERGENT SEED MIX
	WET MEADOW SEED MIX
	LOW PROFILE PRAIRIE SEED MIX
	UPLAND MEADOW SEED MIX
	WOODLAND MANAGEMENT AREA
	WETLAND RESTORATION AREA



SHEET KEY MAP
NOT TO SCALE

REVISIONS	DATE
2	8.10.18
1 - FOR BID	6.18.18

DATE 6.11.18
PROJECT NO. CA1624
DRAWN GFB
CHECKED MGM
SHEET NO.





GARY R. WEBER
ASSOCIATES, INC.
LAND PLANNING
ECOLOGICAL CONSULTING
LANDSCAPE ARCHITECTURE
212 SOUTH MAIN STREET
WHEATON, ILLINOIS 60187
PHONE: 630-668-7197

CLIENT
LENNAR
1141 E. MAIN STREET
SUITE 108
EAST DUNDEE, ILLINOIS 60118

ENGINEER
MACKIE CONSULTANTS, LLC
9575 W. HIGGINS ROAD
SUITE 500
ROSEMONT, IL 60018

ECOLOGICAL
MIDWEST ECOLOGICAL, INC.
P.O. BOX 321
GILBERTS, ILLINOIS 60136

FORESTRY
URBAN FOREST MANAGEMENT, INC.
960 ROUTE 22, SUITE 207
FOX RIVER GROVE, ILLINOIS 60021

WOODLORE ESTATES
CRYSTAL LAKE, ILLINOIS
LANDSCAPE PLAN

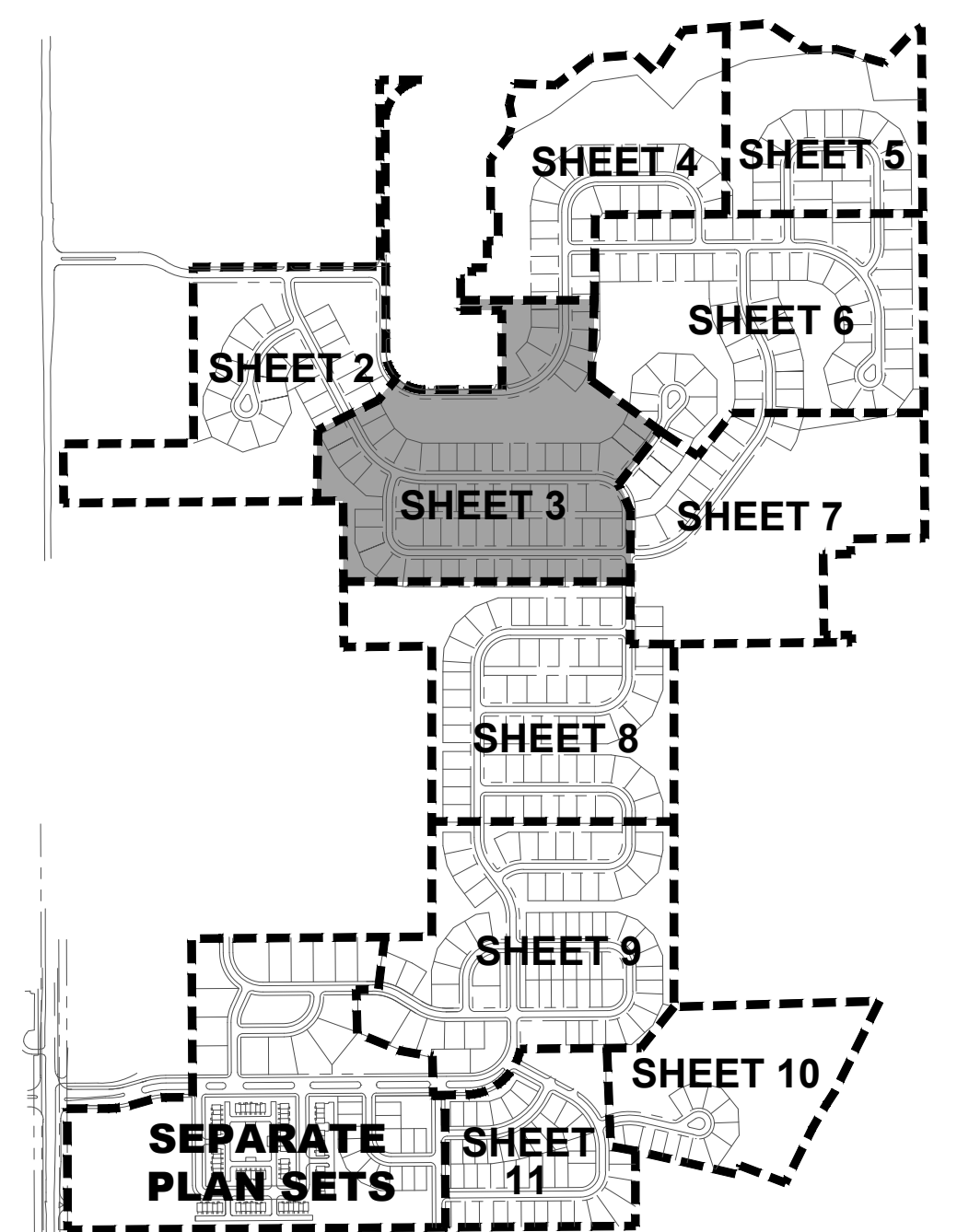
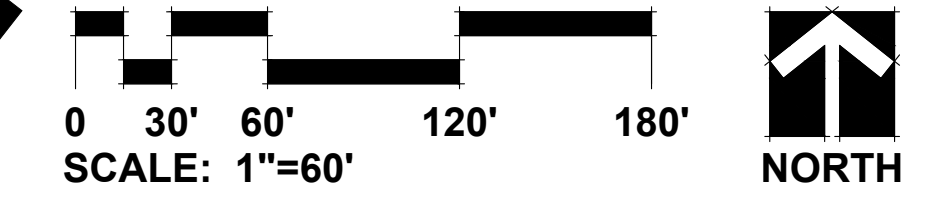
2 8.10.18
1 - FOR BID 6.18.18
REVISIONS

DATE 6.11.18
PROJECT NO. CA1624
DRAWN GFB
CHECKED MGM
SHEET NO.

3 OF 21

NATIVE AREAS LEGEND

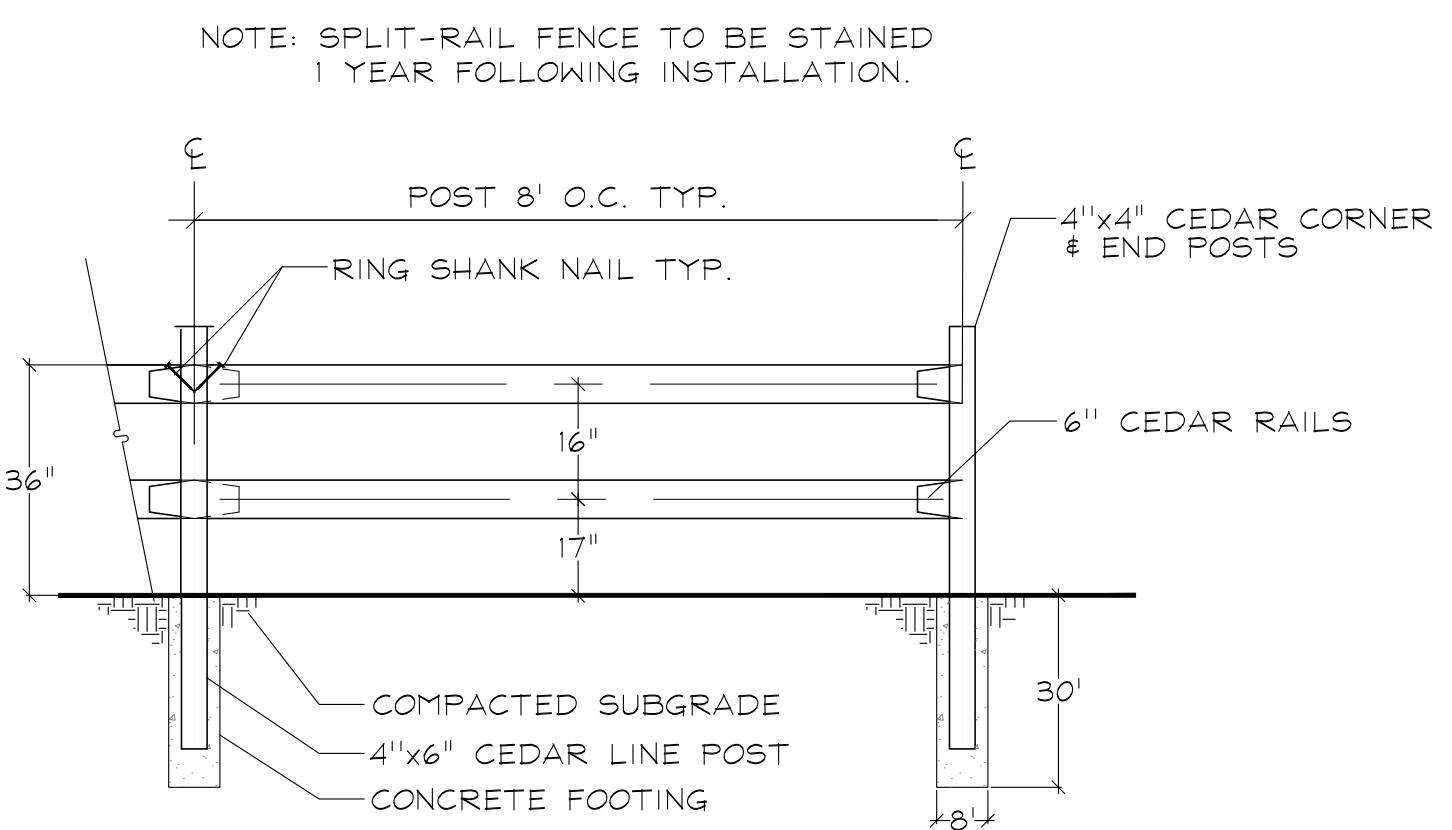
Key	Description
	EMERGENT SEED MIX
	WET MEADOW SEED MIX
	LOW PROFILE PRAIRIE SEED MIX
	UPLAND MEADOW SEED MIX
	WOODLAND MANAGEMENT AREA
	WETLAND RESTORATION AREA



SHEET KEY MAP
NOT TO SCALE

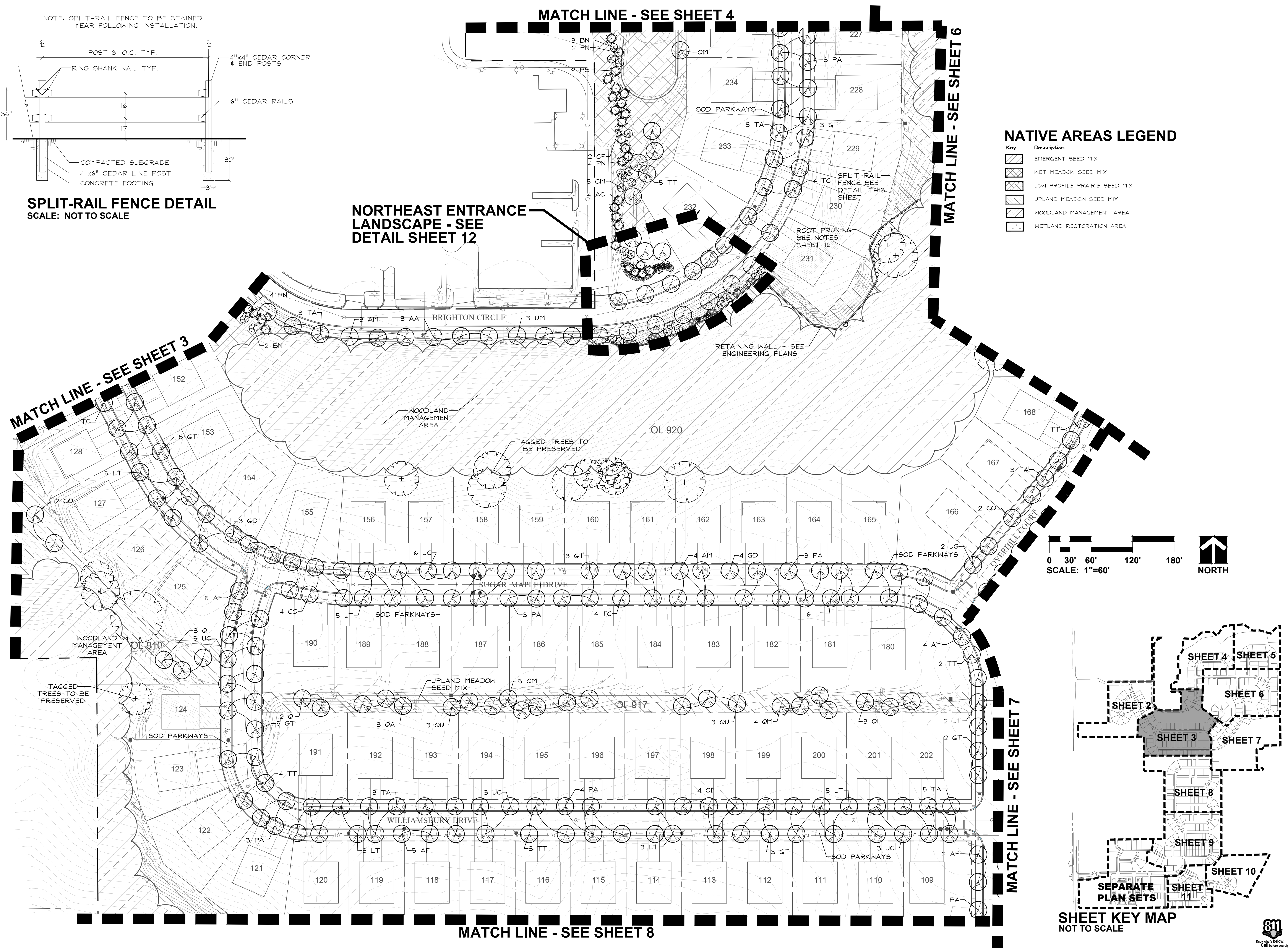
MATCH LINE - SEE SHEET 4

MATCH LINE - SEE SHEET 6



SPLIT-RAIL FENCE DETAIL
SCALE: NOT TO SCALE

**NORTHEAST ENTRANCE
LANDSCAPE - SEE
DETAIL SHEET 12**



MATCH LINE - SEE SHEET 8

MATCH LINE - SEE SHEET 7

MATCH LINE - SEE SHEET 3

PLOT COVERING





GARY R. WEBER
ASSOCIATES, INC.
LAND PLANNING
ECOLOGICAL CONSULTING
LANDSCAPE ARCHITECTURE
212 SOUTH MAIN STREET
WHEATON, ILLINOIS 60187
PHONE: 630-668-7197

CLIENT
LENNAR
1141 E. MAIN STREET
SUITE 108
EAST DUNDEE, ILLINOIS 60118

ENGINEER
MACKIE CONSULTANTS, LLC
9575 W. HIGGINS ROAD
SUITE 500
ROSEMONT, IL 60018

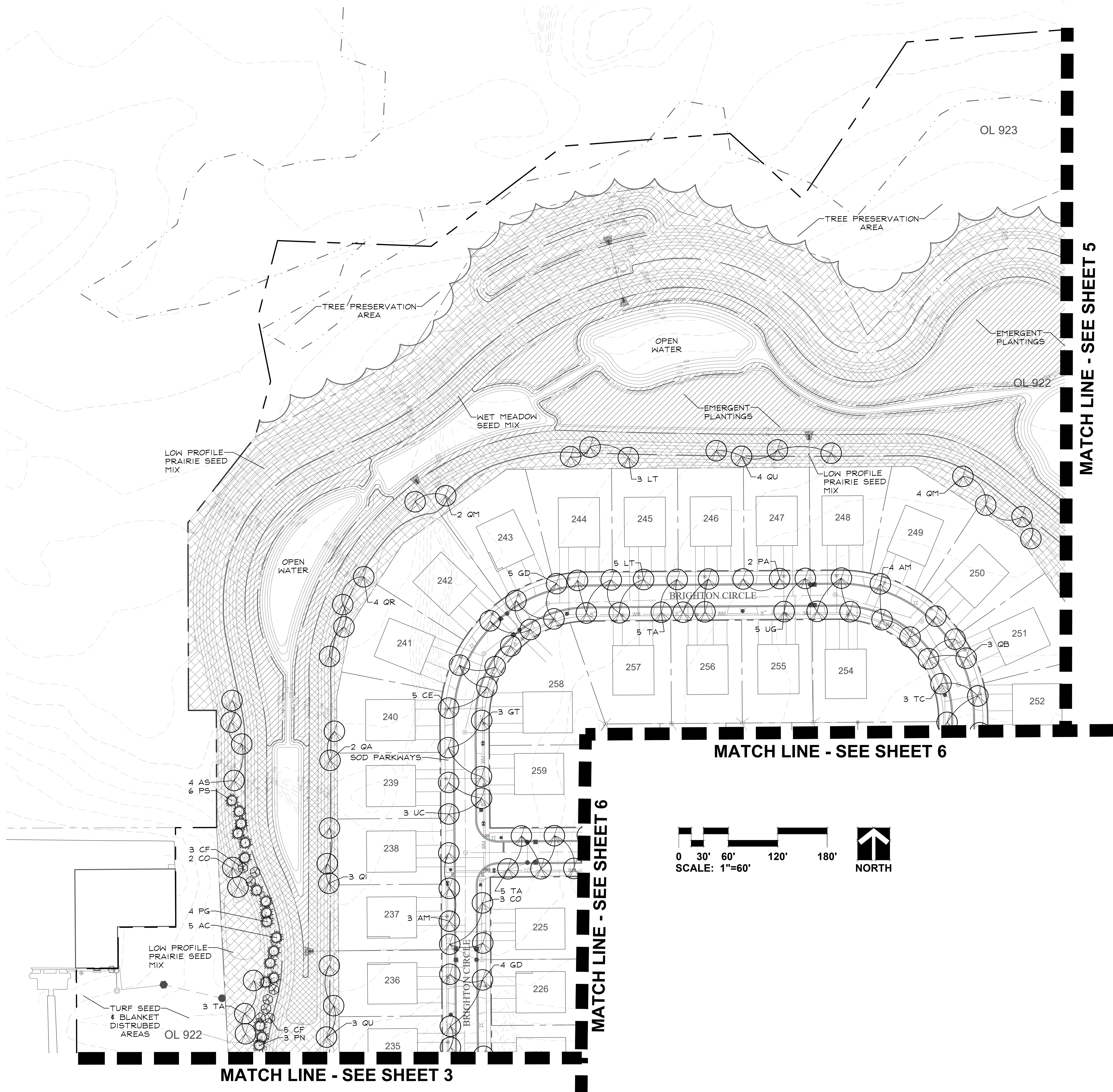
ECOLOGICAL
MIDWEST ECOLOGICAL, INC.
P.O. BOX 321
GILBERTS, ILLINOIS 60136

FORESTRY
URBAN FOREST MANAGEMENT, INC.
960 ROUTE 22, SUITE 207
FOX RIVER GROVE, ILLINOIS 60021

WOODLORE ESTATES

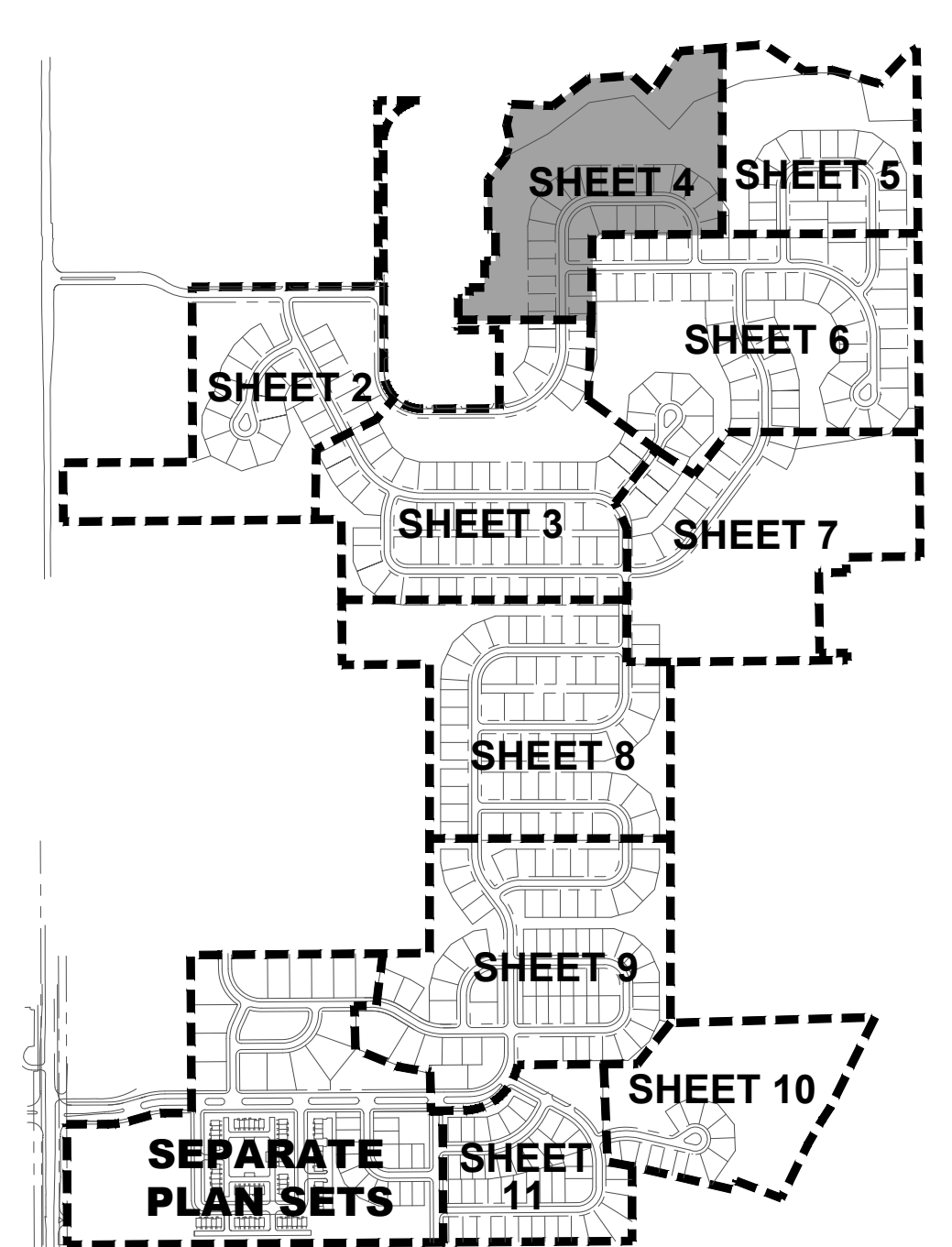
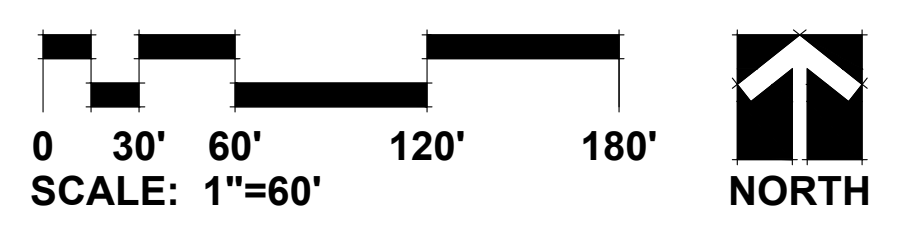
CRYSTAL LAKE, ILLINOIS

LANDSCAPE PLAN



NATIVE AREAS LEGEND

Key	Description
[Hatched pattern]	EMERGENT SEED MIX
[Hatched pattern]	WET MEADOW SEED MIX
[Hatched pattern]	LOW PROFILE PRAIRIE SEED MIX
[Hatched pattern]	UPLAND MEADOW SEED MIX
[Hatched pattern]	WOODLAND MANAGEMENT AREA
[Hatched pattern]	WETLAND RESTORATION AREA



REVISIONS	DATE
2	8.10.18
1 - FOR BID	6.18.18

DATE	6.11.18
PROJECT NO.	CA1624
DRAWN	GFB
CHECKED	MGM
SHEET NO.	



DATE PLOTTED: 6/11/18



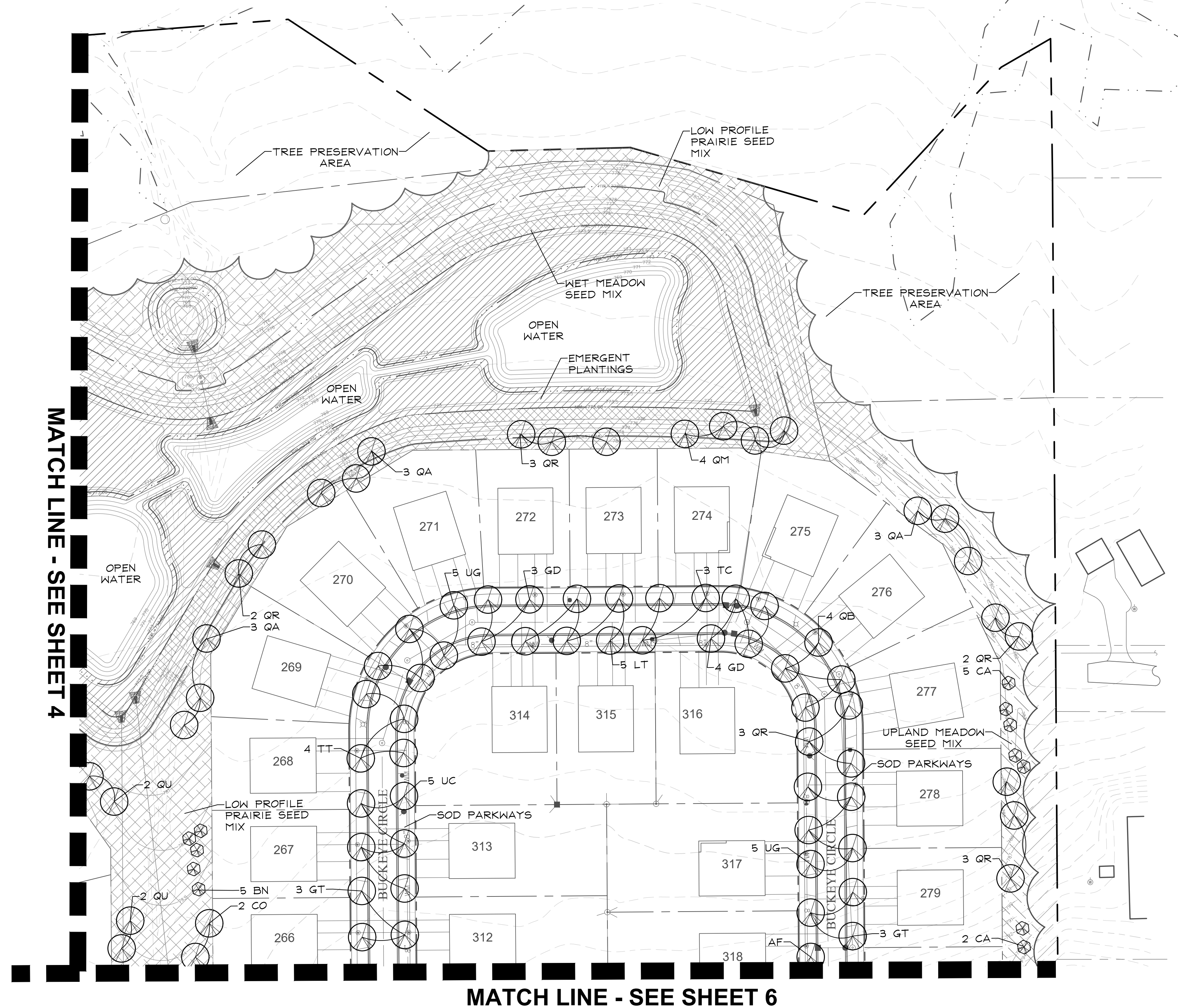
GARY R. WEBER
ASSOCIATES, INC.
LAND PLANNING
ECOLOGICAL CONSULTING
LANDSCAPE ARCHITECTURE
212 SOUTH MAIN STREET
WHEATON, ILLINOIS 60187
PHONE: 630-668-7197

CLIENT
LENNAR
1141 E. MAIN STREET
SUITE 108
EAST DUNDEE, ILLINOIS 60118

ENGINEER
MACKIE CONSULTANTS, LLC
9575 W. HIGGINS ROAD
SUITE 500
ROSEMONT, IL 60018

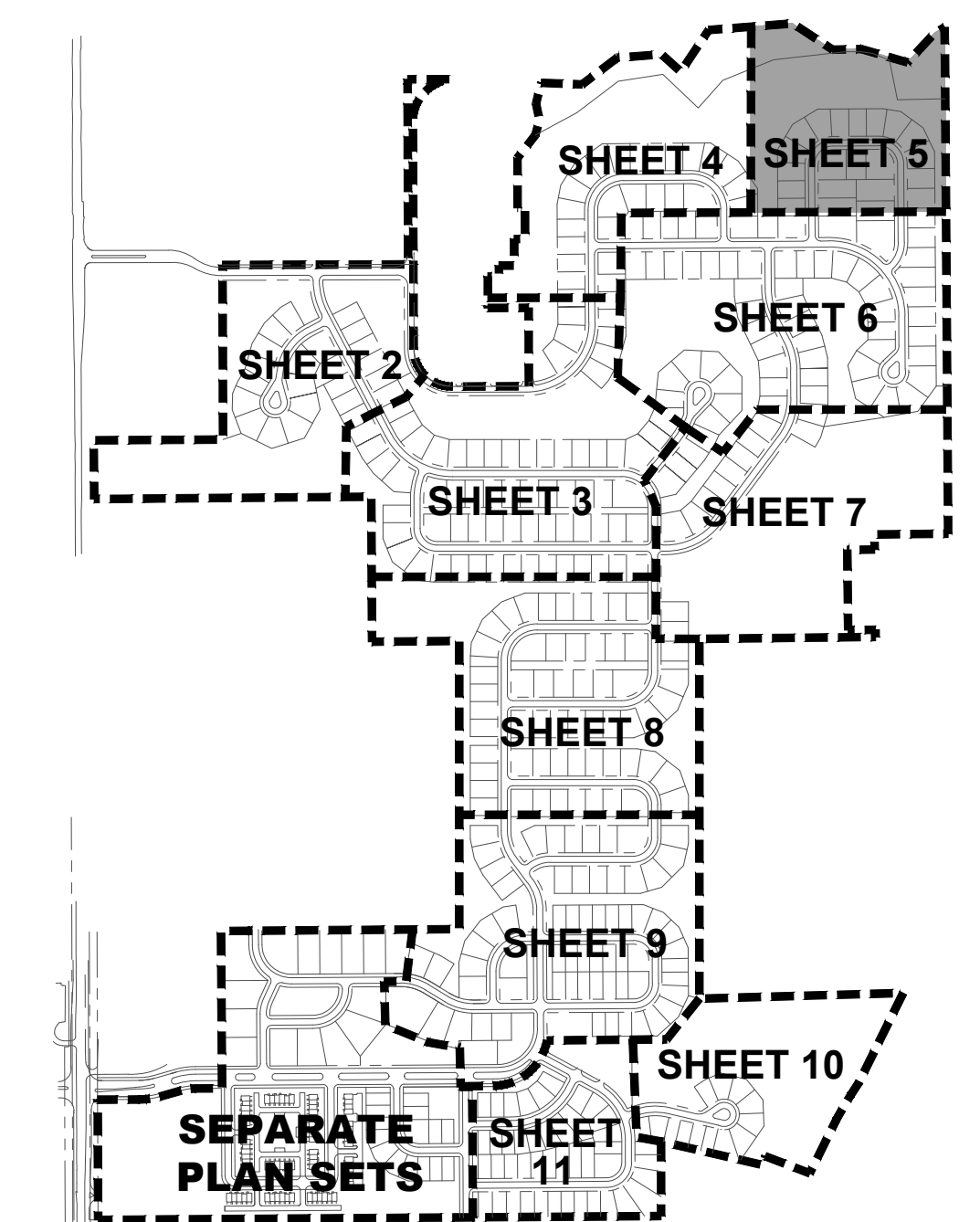
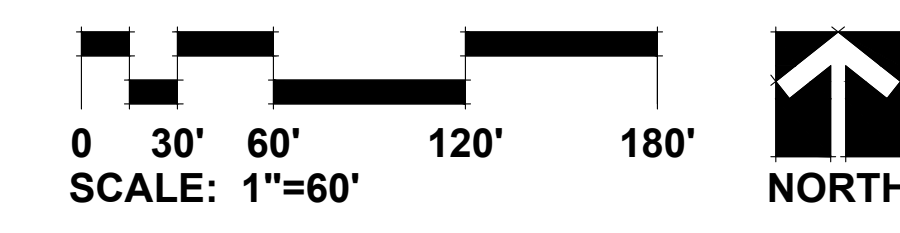
ECOLOGICAL
MIDWEST ECOLOGICAL, INC.
P.O. BOX 321
GILBERTS, ILLINOIS 60136

FORESTRY
URBAN FOREST MANAGEMENT, INC.
960 ROUTE 22, SUITE 207
FOX RIVER GROVE, ILLINOIS 60021



NATIVE AREAS LEGEND

Key	Description
	EMERGENT SEED MIX
	WET MEADOW SEED MIX
	LOW PROFILE PRAIRIE SEED MIX
	UPLAND MEADOW SEED MIX
	WOODLAND MANAGEMENT AREA
	WETLAND RESTORATION AREA



WOODLORE ESTATES
CRYSTAL LAKE, ILLINOIS
LANDSCAPE PLAN

NO.	DESCRIPTION	DATE
2	FOR BID	8.10.18
1	FOR BID	6.18.18

DATE 6.11.18
PROJECT NO. CA1624
DRAWN GFB
CHECKED MGM
SHEET NO.



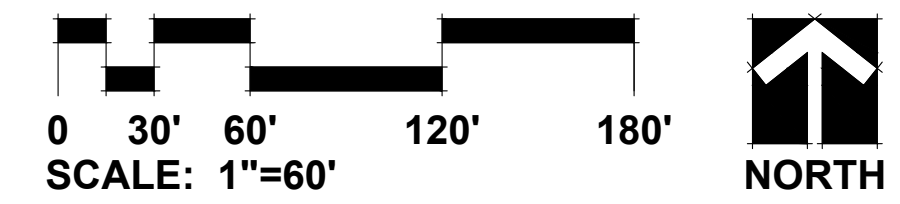
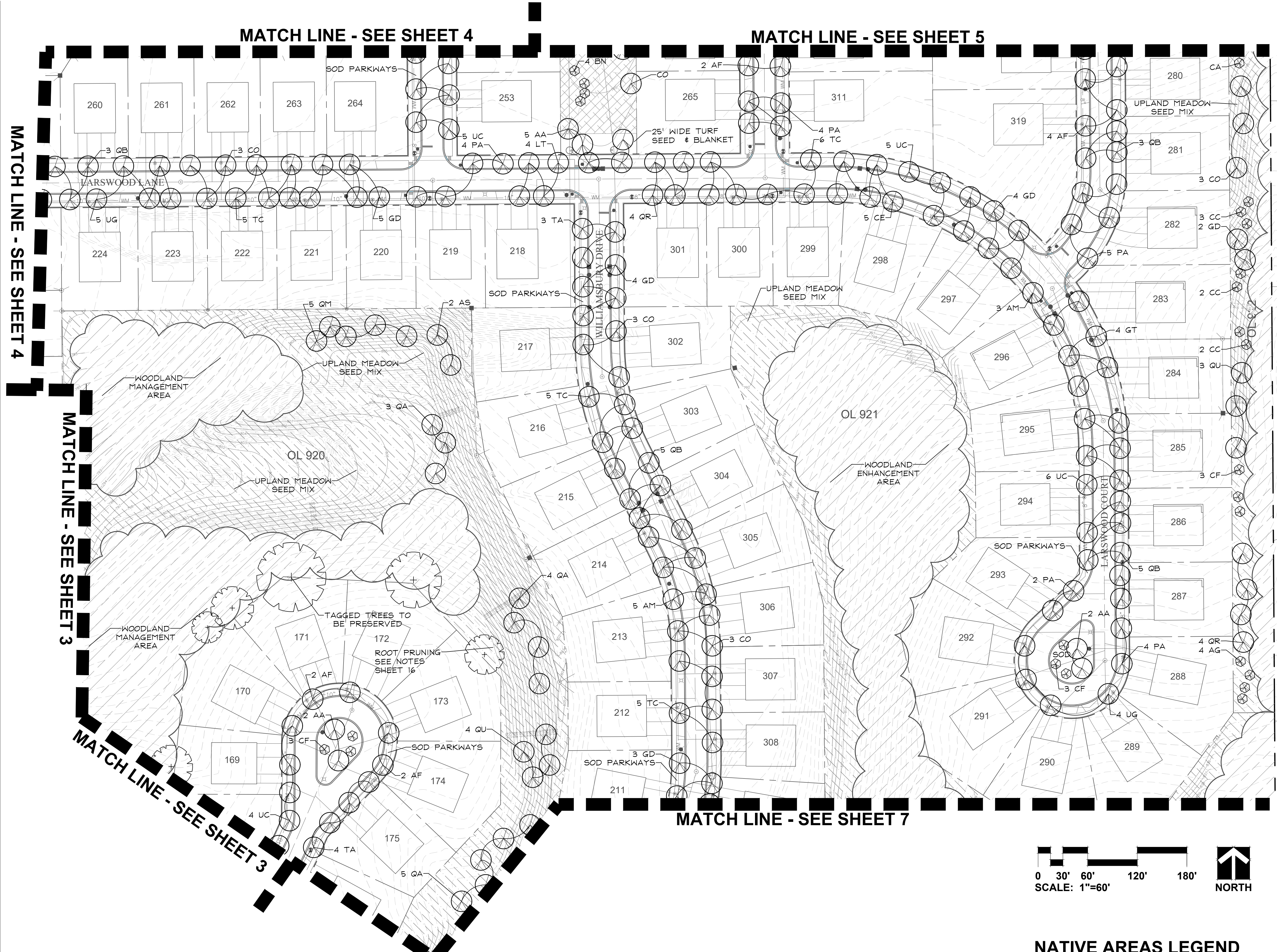
DATE PLOTTED: 6/11/18



GARY R. WEBER
ASSOCIATES, INC.
LAND PLANNING
ECOLOGICAL CONSULTING
LANDSCAPE ARCHITECTURE
212 SOUTH MAIN STREET
WHEATON, ILLINOIS 60187
PHONE: 630-668-7197

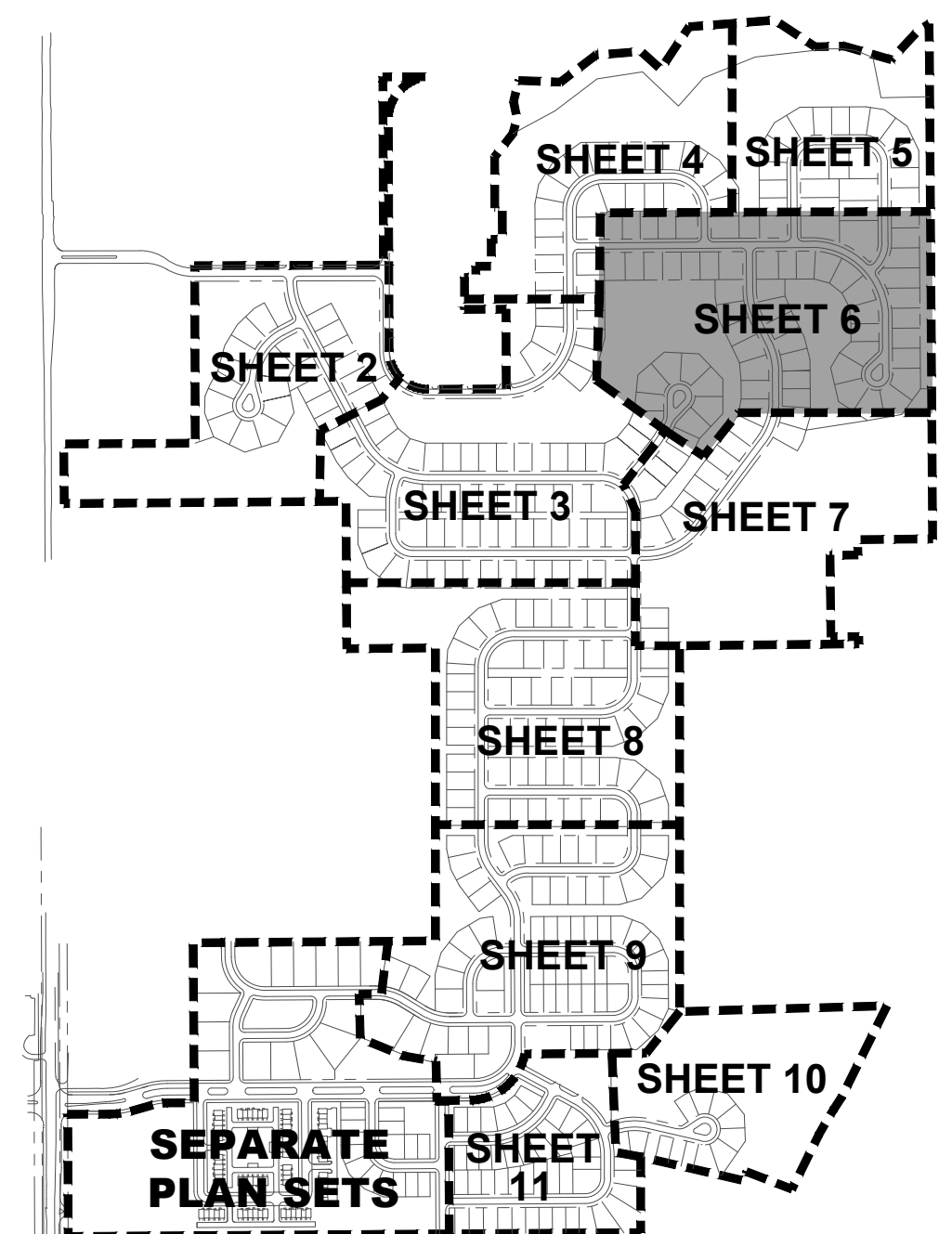
CLIENT
LENNAR
1141 E. MAIN STREET
SUITE 108
EAST DUNDEE, ILLINOIS 60118
ENGINEER
MACKEY CONSULTANTS, LLC
9575 W. HIGGINS ROAD
SUITE 500
ROSEMONT, IL 60018
ECOLOGICAL
MIDWEST ECOLOGICAL, INC.
P.O. BOX 321
GILBERTS, ILLINOIS 60136
FORESTRY
URBAN FOREST MANAGEMENT, INC.
960 ROUTE 22, SUITE 207
FOX RIVER GROVE, ILLINOIS 60021

WOODLORE ESTATES
CRYSTAL LAKE, ILLINOIS
LANDSCAPE PLAN



NATIVE AREAS LEGEND

Key	Description
	EMERGENT SEED MIX
	WET MEADOW SEED MIX
	LOW PROFILE PRAIRIE SEED MIX
	UPLAND MEADOW SEED MIX
	WOODLAND MANAGEMENT AREA
	WETLAND RESTORATION AREA



SHEET KEY MAP
NOT TO SCALE

REVISIONS	DATE
2	8.10.18
1 - FOR BID	6.18.18

DATE 6.11.18
PROJECT NO. CA1624
DRAWN GFB
CHECKED MGM
SHEET NO.



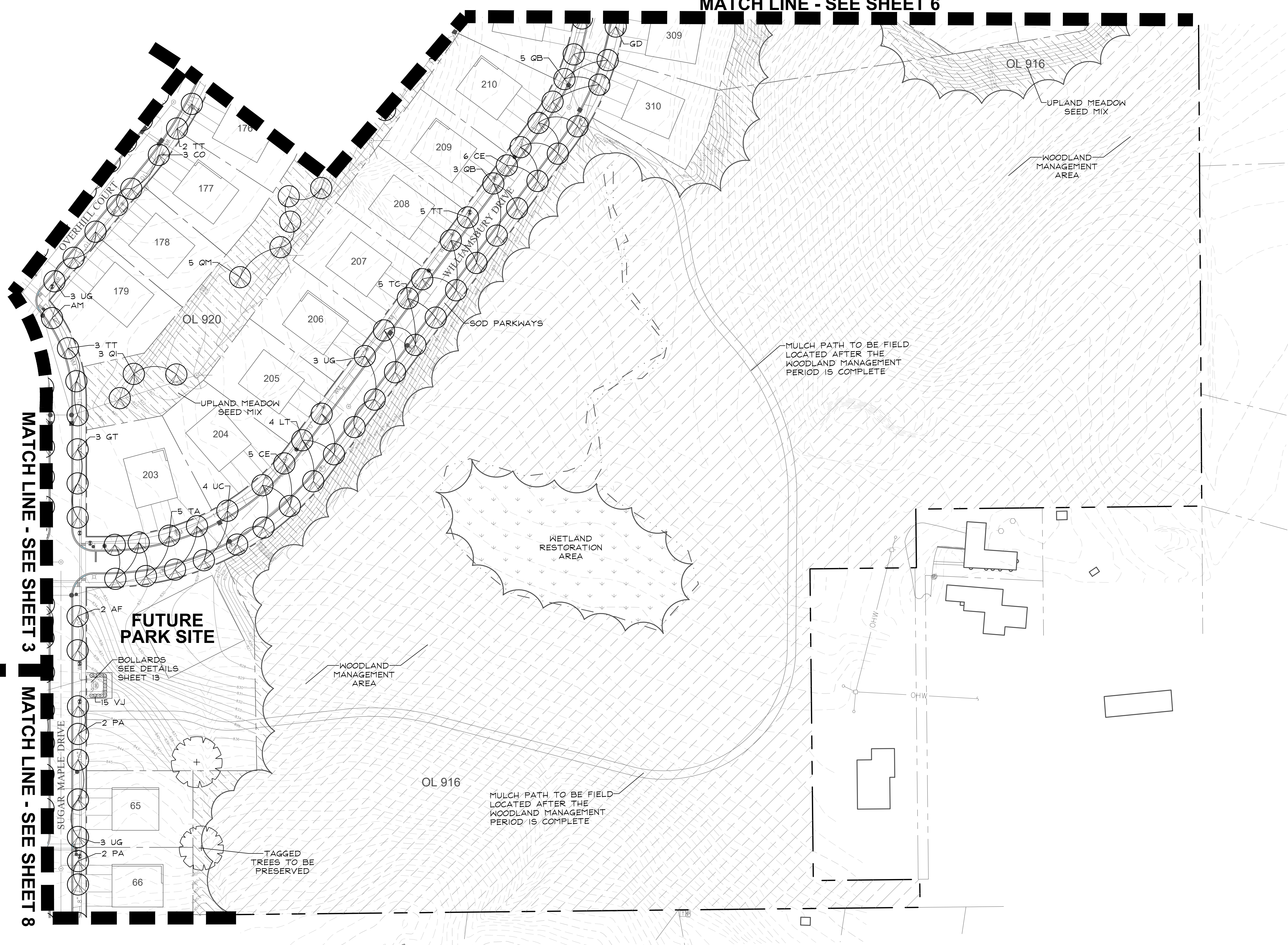


GARY R. WEBER
ASSOCIATES, INC.
LAND PLANNING
ECOLOGICAL CONSULTING
LANDSCAPE ARCHITECTURE
212 SOUTH MAIN STREET
WHEATON, ILLINOIS 60187
PHONE: 630-668-7197

CLIENT
LENNAR
1141 E. MAIN STREET
SUITE 108
EAST DUNDEE, ILLINOIS 60118
ENGINEER
MACKIE CONSULTANTS, LLC
9575 W. HIGGINS ROAD
SUITE 500
ROSEMONT, IL 60018
ECOLOGICAL
MIDWEST ECOLOGICAL, INC.
P.O. BOX 321
GILBERTS, ILLINOIS 60136
FORESTRY
URBAN FOREST MANAGEMENT, INC.
960 ROUTE 22, SUITE 207
FOX RIVER GROVE, ILLINOIS 60021

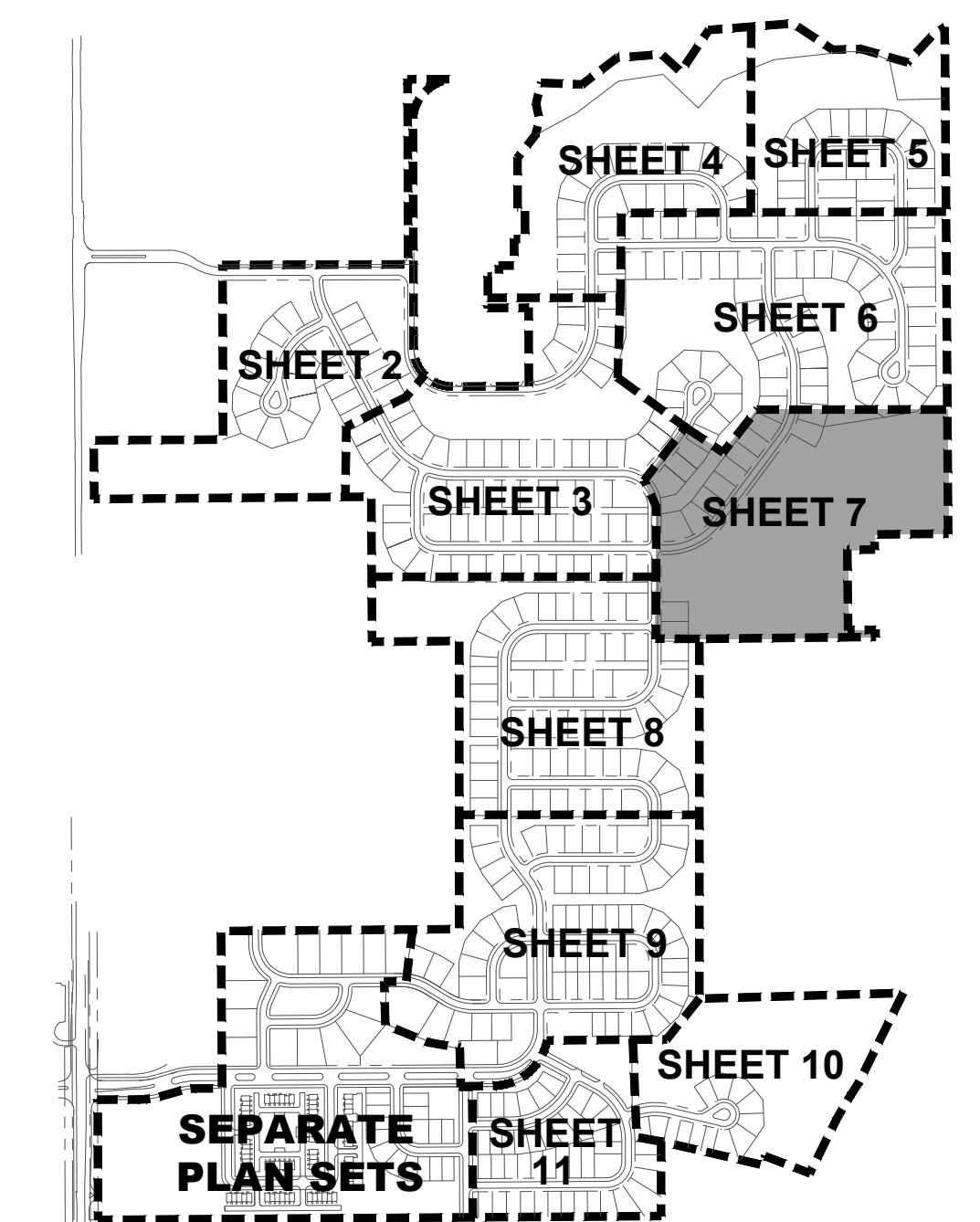
WOODLORE ESTATES
CRYSTAL LAKE, ILLINOIS
LANDSCAPE PLAN

MATCH LINE - SEE SHEET 6

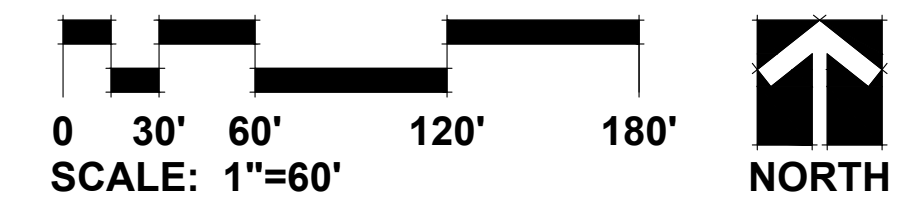


NATIVE AREAS LEGEND

Key	Description
	EMERGENT SEED MIX
	WET MEADOW SEED MIX
	LOW PROFILE PRAIRIE SEED MIX
	UPLAND MEADOW SEED MIX
	WOODLAND MANAGEMENT AREA
	WETLAND RESTORATION AREA



SHEET KEY MAP
NOT TO SCALE



REVISIONS	DATE
2	8.10.18
1 - FOR BID	6.18.18

DATE 6.11.18
PROJECT NO. CA1624
DRAWN GFB
CHECKED MGM
SHEET NO.

7 OF 21





GARY R. WEBER
ASSOCIATES, INC.
LAND PLANNING
ECOLOGICAL CONSULTING
LANDSCAPE ARCHITECTURE
212 SOUTH MAIN STREET
WHEATON, ILLINOIS 60187
PHONE: 630-668-7197

CLIENT
LENNAR
1141 E. MAIN STREET
SUITE 108
EAST DUNDEE, ILLINOIS 60118

ENGINEER
MACKIE CONSULTANTS, LLC
9575 W. HIGGINS ROAD
SUITE 500
ROSEMONT, IL 60018

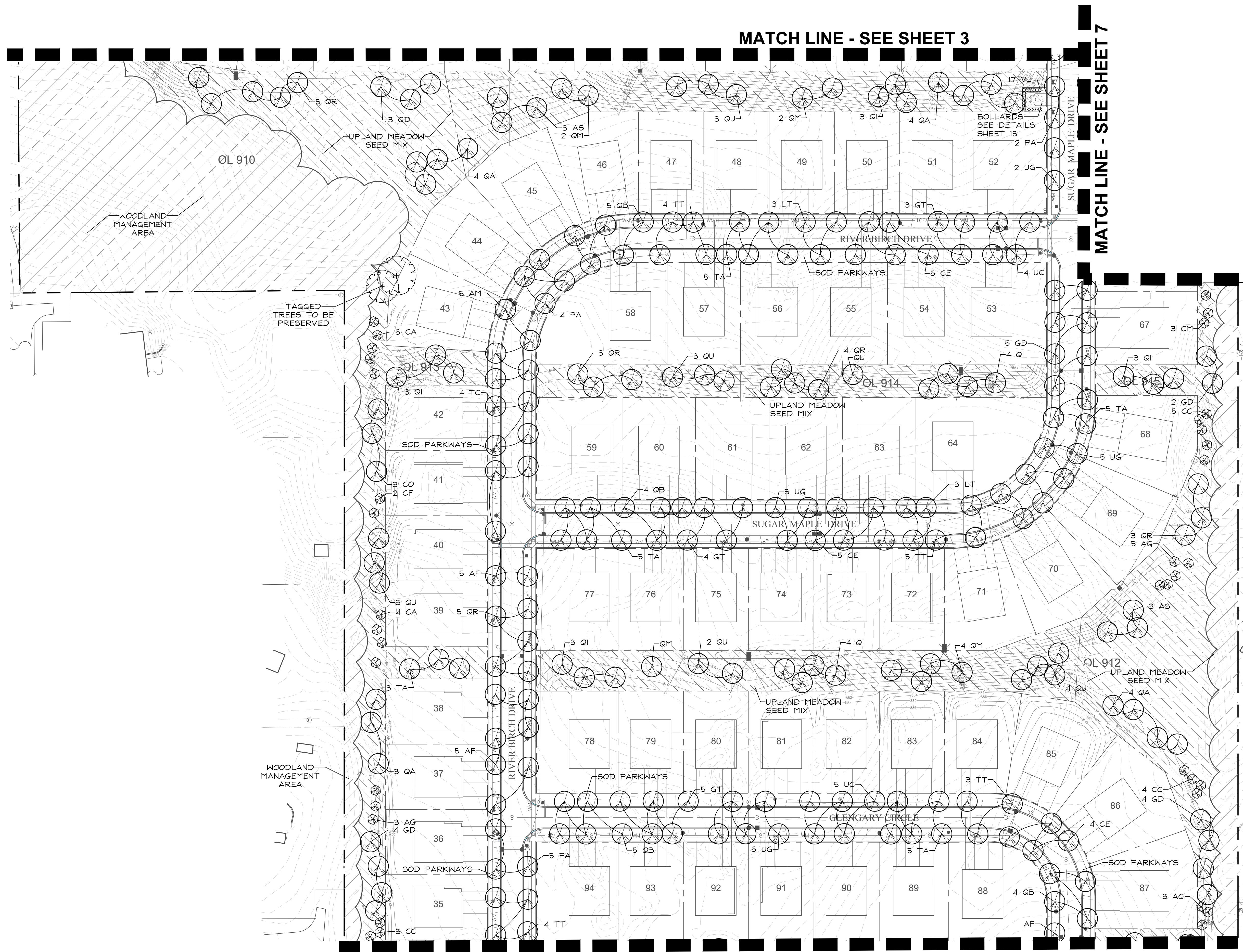
ECOLOGICAL
MIDWEST ECOLOGICAL, INC.
P.O. BOX 321
GILBERTS, ILLINOIS 60136

FORESTRY
URBAN FOREST MANAGEMENT, INC.
960 ROUTE 22, SUITE 207
FOX RIVER GROVE, ILLINOIS 60021

WOODLORE ESTATES

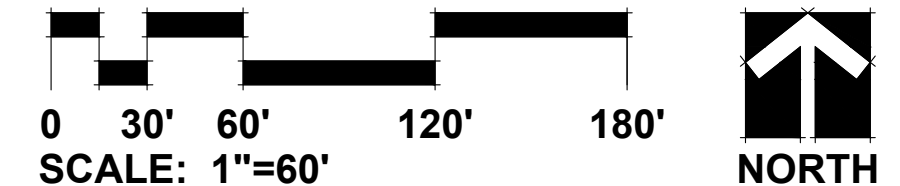
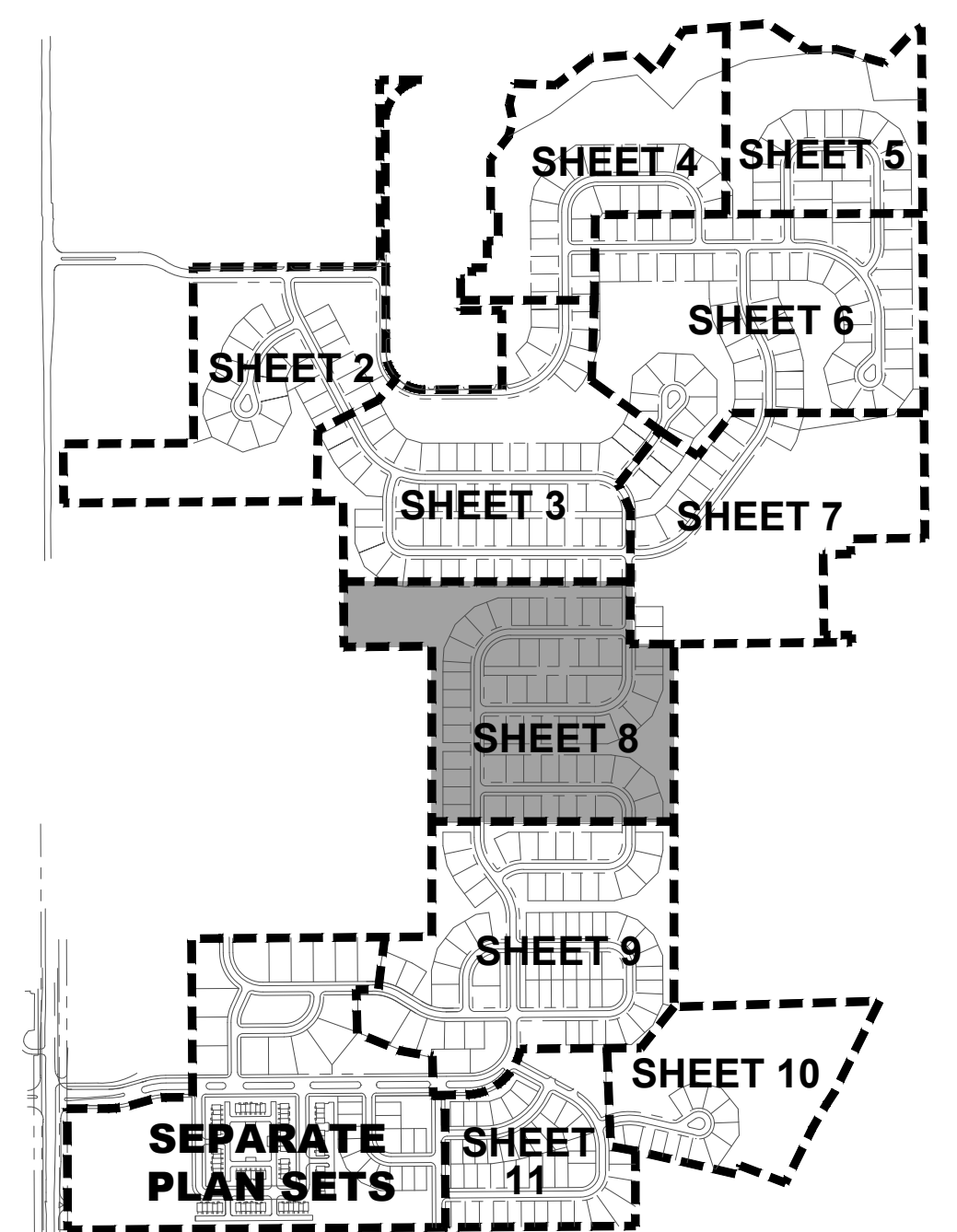
CRYSTAL LAKE, ILLINOIS

LANDSCAPE PLAN



NATIVE AREAS LEGEND

Key	Description
	EMERGENT SEED MIX
	WET MEADOW SEED MIX
	LOW PROFILE PRAIRIE SEED MIX
	UPLAND MEADOW SEED MIX
	WOODLAND MANAGEMENT AREA
	WETLAND RESTORATION AREA



2 8.10.18
1 - FOR BID 6.18.18
REVISIONS

DATE 6.11.18
PROJECT NO. CA1624
DRAWN GFB
CHECKED MGM
SHEET NO.

8 OF 21





GARY R. WEBER
ASSOCIATES, INC.
LAND PLANNING
ECOLOGICAL CONSULTING
LANDSCAPE ARCHITECTURE
212 SOUTH MAIN STREET
WHEATON, ILLINOIS 60187
PHONE: 630-668-7197

CLIENT
LENNAR
1141 E. MAIN STREET
SUITE 108
EAST DUNDEE, ILLINOIS 60118
ENGINEER
MACKIE CONSULTANTS, LLC
9575 W. HIGGINS ROAD
SUITE 500
ROSEMONT, IL 60018
ECOLOGICAL
MIDWEST ECOLOGICAL, INC.
P.O. BOX 321
GILBERTS, ILLINOIS 60136
FORESTRY
URBAN FOREST MANAGEMENT, INC.
960 ROUTE 22, SUITE 207
FOX RIVER GROVE, ILLINOIS 60021

WOODLORE ESTATES
CRYSTAL LAKE, ILLINOIS
LANDSCAPE PLAN

MATCH LINE - SEE SHEET 8

BUFFER 1 LANDSCAPE
SEE DETAIL SHEET 13

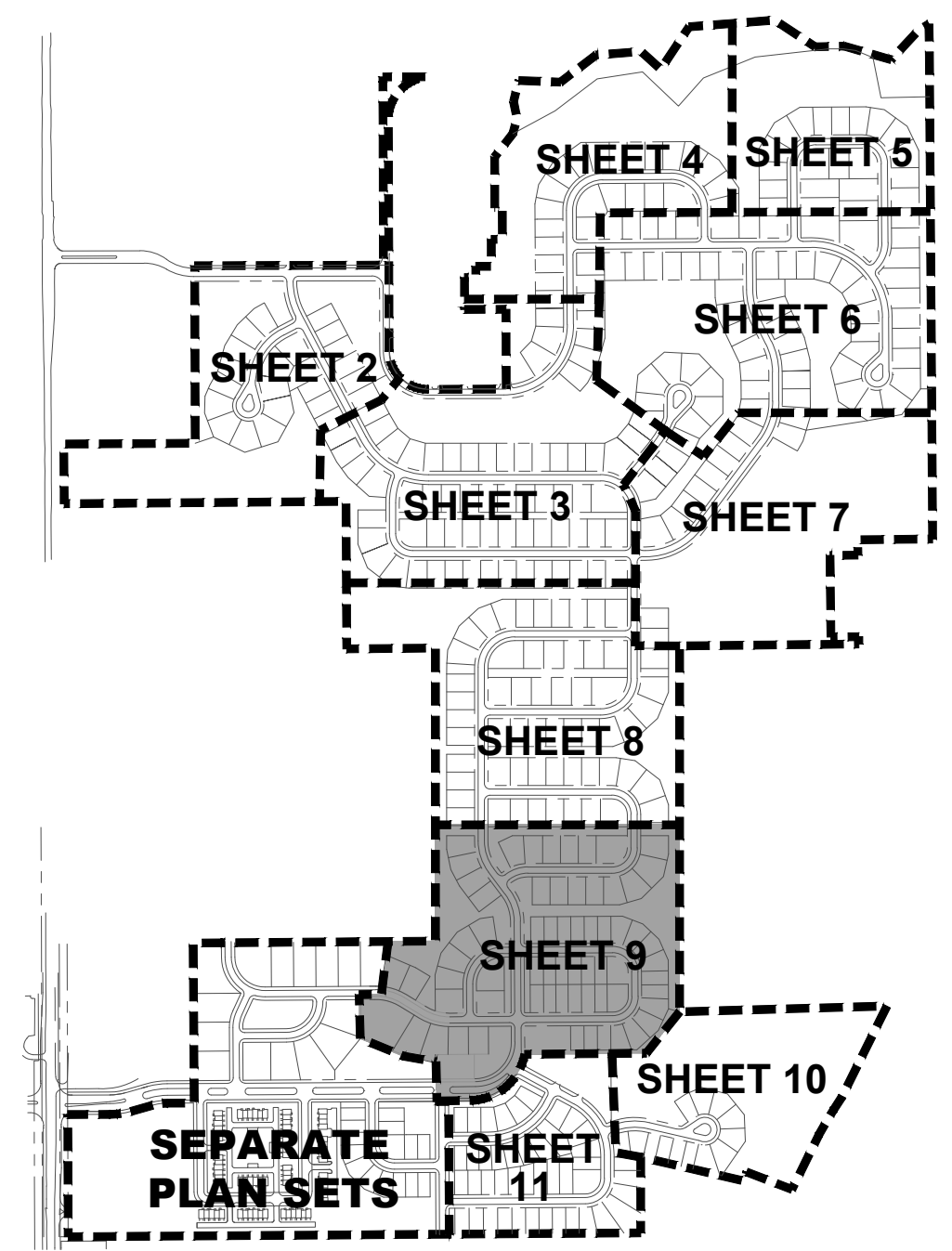
CLUB SITE
SEPARATE
PLAN SET

MATCH LINE - SEE SHEET 11

MATCH LINE - SEE SHEET 10

NATIVE AREAS LEGEND

Key	Description
	EMERGENT SEED MIX
	WET MEADOW SEED MIX
	LOW PROFILE PRAIRIE SEED MIX
	UPLAND MEADOW SEED MIX
	WOODLAND MANAGEMENT AREA
	WETLAND RESTORATION AREA

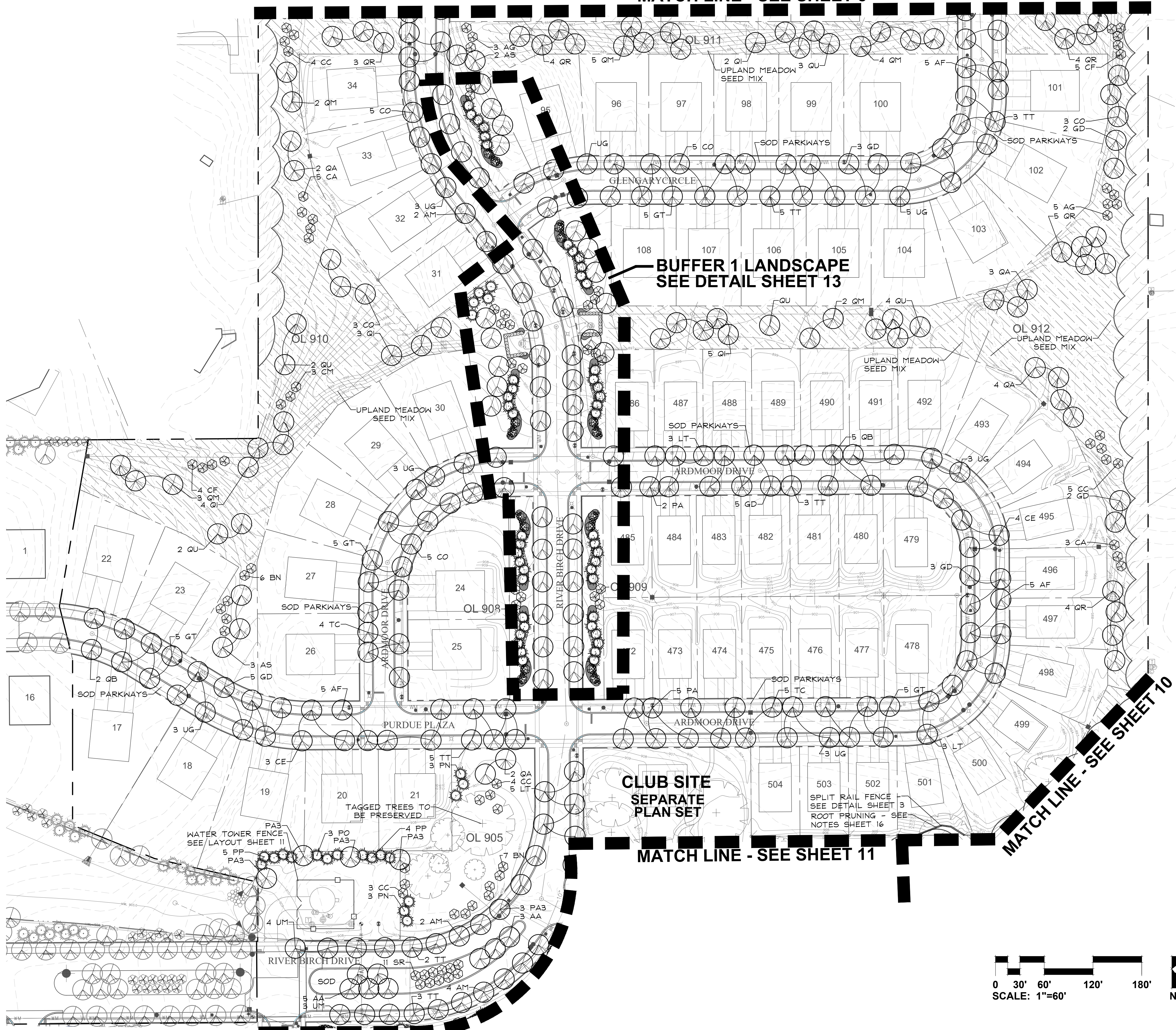
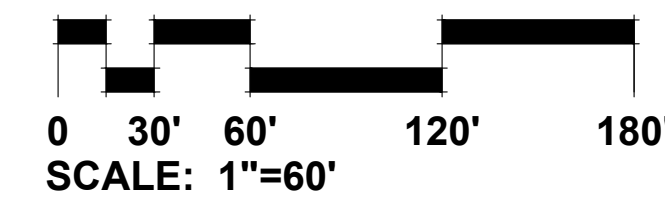


SHEET KEY MAP
NOT TO SCALE

2	8.10.18
1 - FOR BID	6.18.18
REVISIONS	

DATE	6.11.18
PROJECT NO.	CA1624
DRAWN	GFB
CHECKED	MGM
SHEET NO.	

9 OF 21



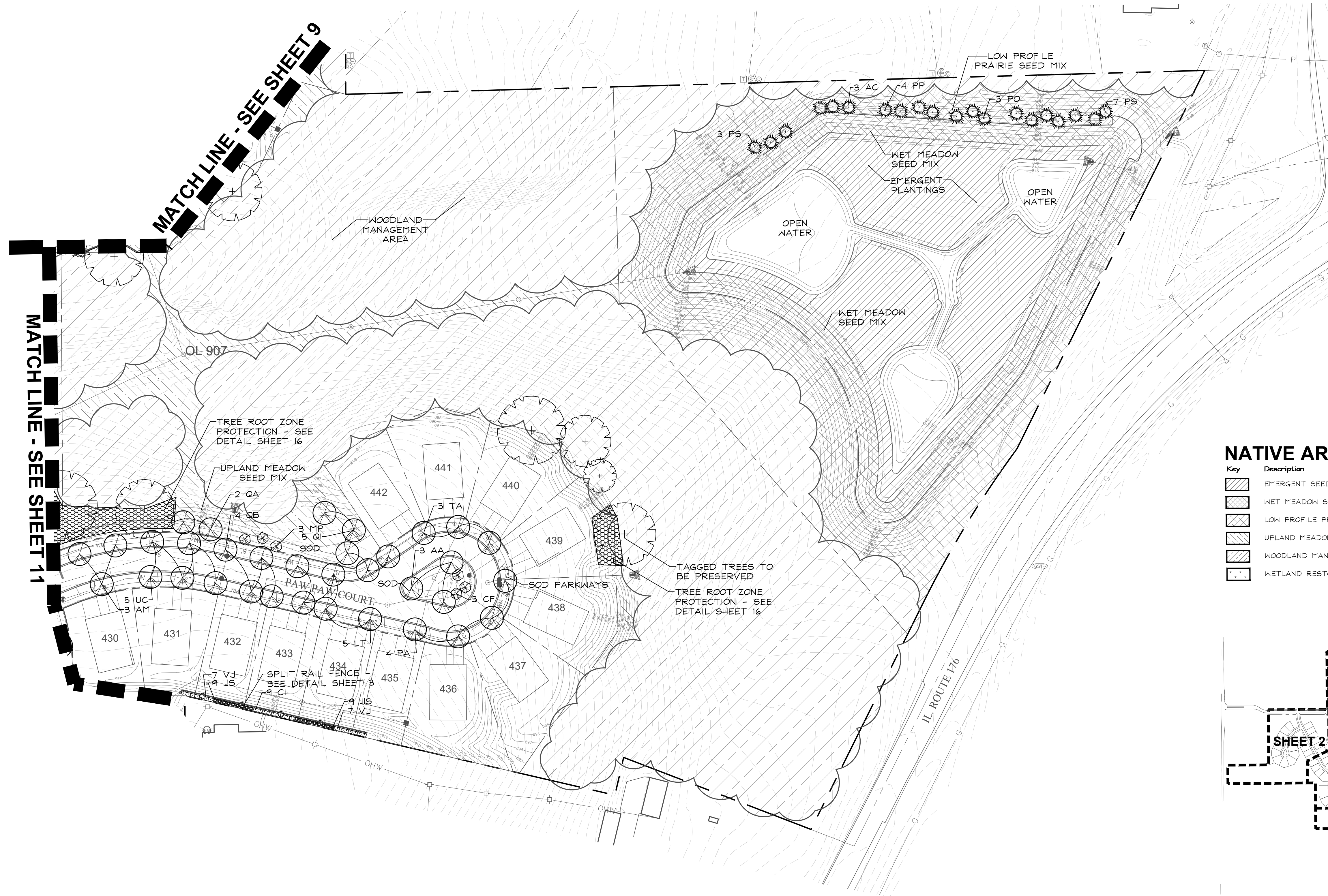
NOT TO SCALE



GARY R. WEBER
ASSOCIATES, INC.
LAND PLANNING
ECOLOGICAL CONSULTING
LANDSCAPE ARCHITECTURE
212 SOUTH MAIN STREET
WHEATON, ILLINOIS 60187
PHONE: 630-668-7197

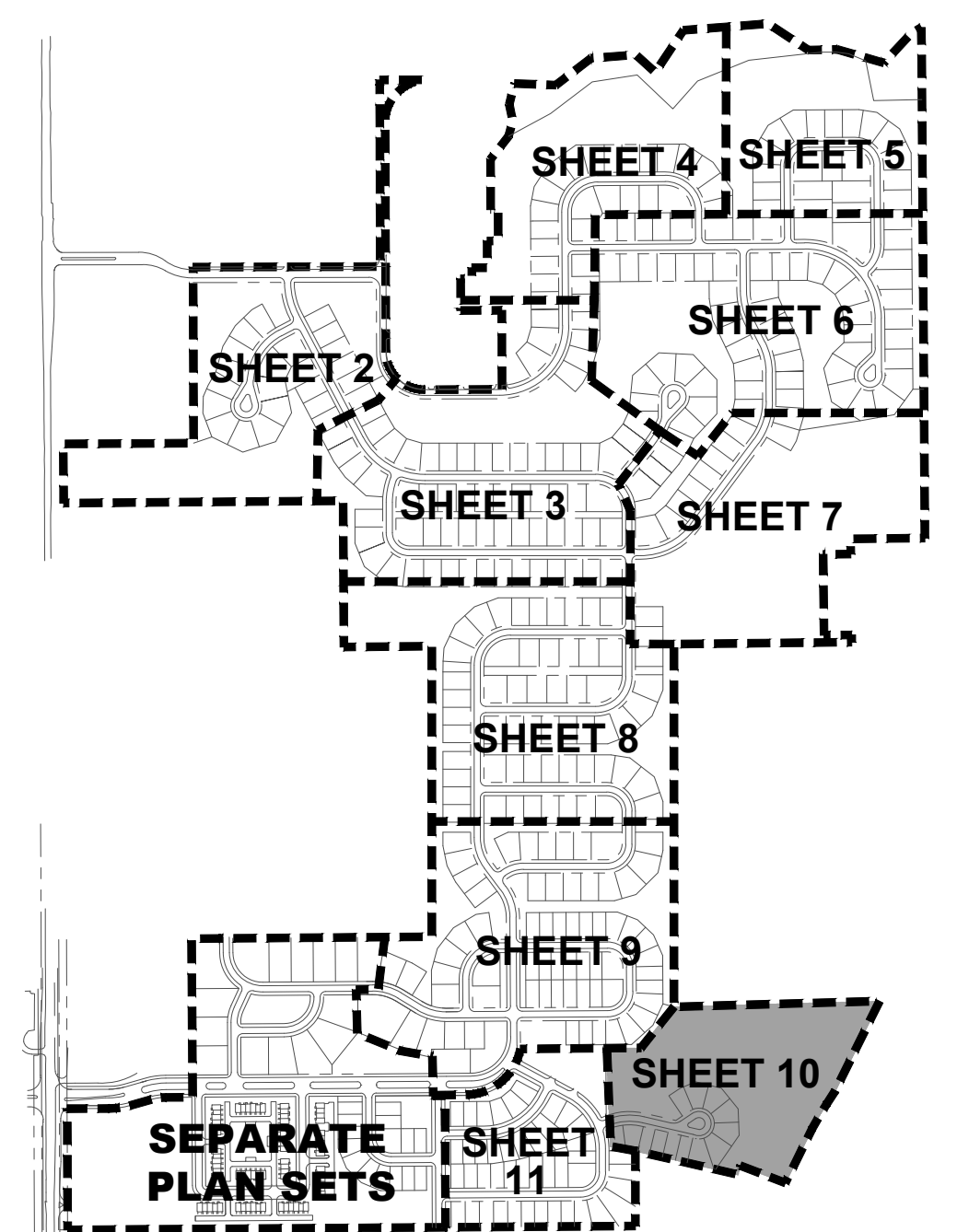
CLIENT
LENNAR
1141 E. MAIN STREET
SUITE 108
EAST DUNDEE, ILLINOIS 60118
ENGINEER
MACKIE CONSULTANTS, LLC
9575 W. HIGGINS ROAD
SUITE 500
ROSEMONT, IL 60018
ECOLOGICAL
MIDWEST ECOLOGICAL, INC.
P.O. BOX 321
GILBERTS, ILLINOIS 60136
FORESTRY
URBAN FOREST MANAGEMENT, INC.
960 ROUTE 22, SUITE 207
FOX RIVER GROVE, ILLINOIS 60021

WOODLORE ESTATES
CRYSTAL LAKE, ILLINOIS
LANDSCAPE PLAN

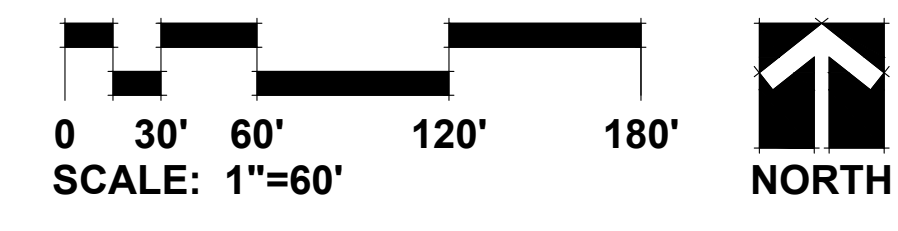


NATIVE AREAS LEGEND

Key	Description
[Pattern]	EMERGENT SEED MIX
[Pattern]	WET MEADOW SEED MIX
[Pattern]	LOW PROFILE PRAIRIE SEED MIX
[Pattern]	UPLAND MEADOW SEED MIX
[Pattern]	WOODLAND MANAGEMENT AREA
[Pattern]	WETLAND RESTORATION AREA



SHEET KEY MAP
NOT TO SCALE



REVISIONS	DATE
2	8.10.18
1 - FOR BID	6.18.18

DATE	6.11.18
PROJECT NO.	CA1624
DRAWN	GFB
CHECKED	MGM
SHEET NO.	

10 OF 21

