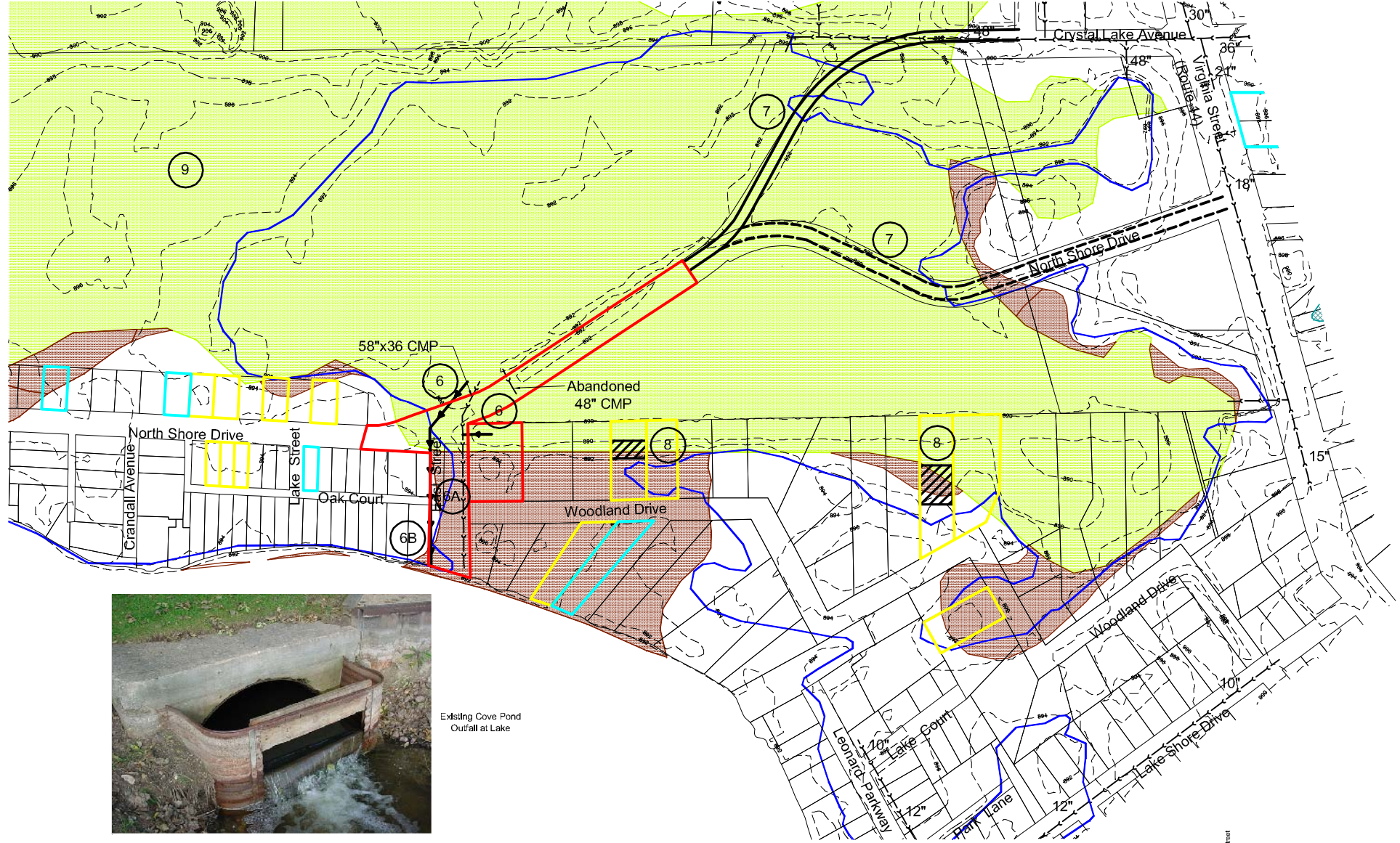
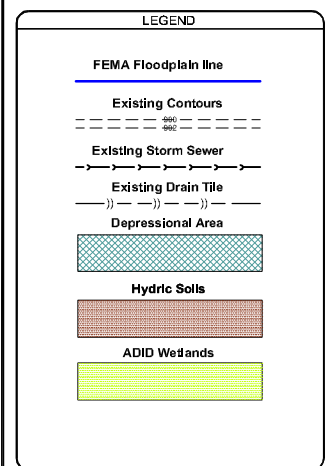
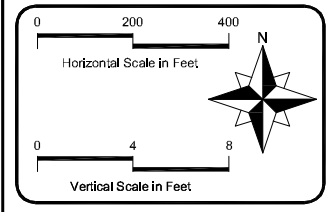


- Potential Alternatives - Area 1B**
6. New culverts under Northshore Drive and out of Woodland Wetland.
  - 6A. New open channel from Northshore to the Lake.
  - 6B. New culverts from Northshore to the Lake.
  7. Re-route Northshore Drive.
  8. Add fill to selected lots.
  9. Add storage at Cove Pond.



Existing Cove Pond Outfall at Lake

## Crystal Lake Flooding Analysis

### Potential Drainage Improvements

### Flood Complaint Area 1B

**Hey and Associates, Inc.**  
 Water Resources, Wetlands and Ecology  
 26375 WEST COMMERCE DRIVE, SUITE 601  
 VOLO, ILLINOIS 60073  
 OFFICE (847) 740-0888  
 FAX (847) 740-2888  
 VOLO@HEYASSOC.COM

PROJECT NO.	08223	EXHIBIT NO.	14
DESIGNED BY	GCS		
DRAWN BY	ALC/CFR		
CHECKED BY	GCS		
APPROVED BY	GCS		
ISSUE DATE	01/30/2009		