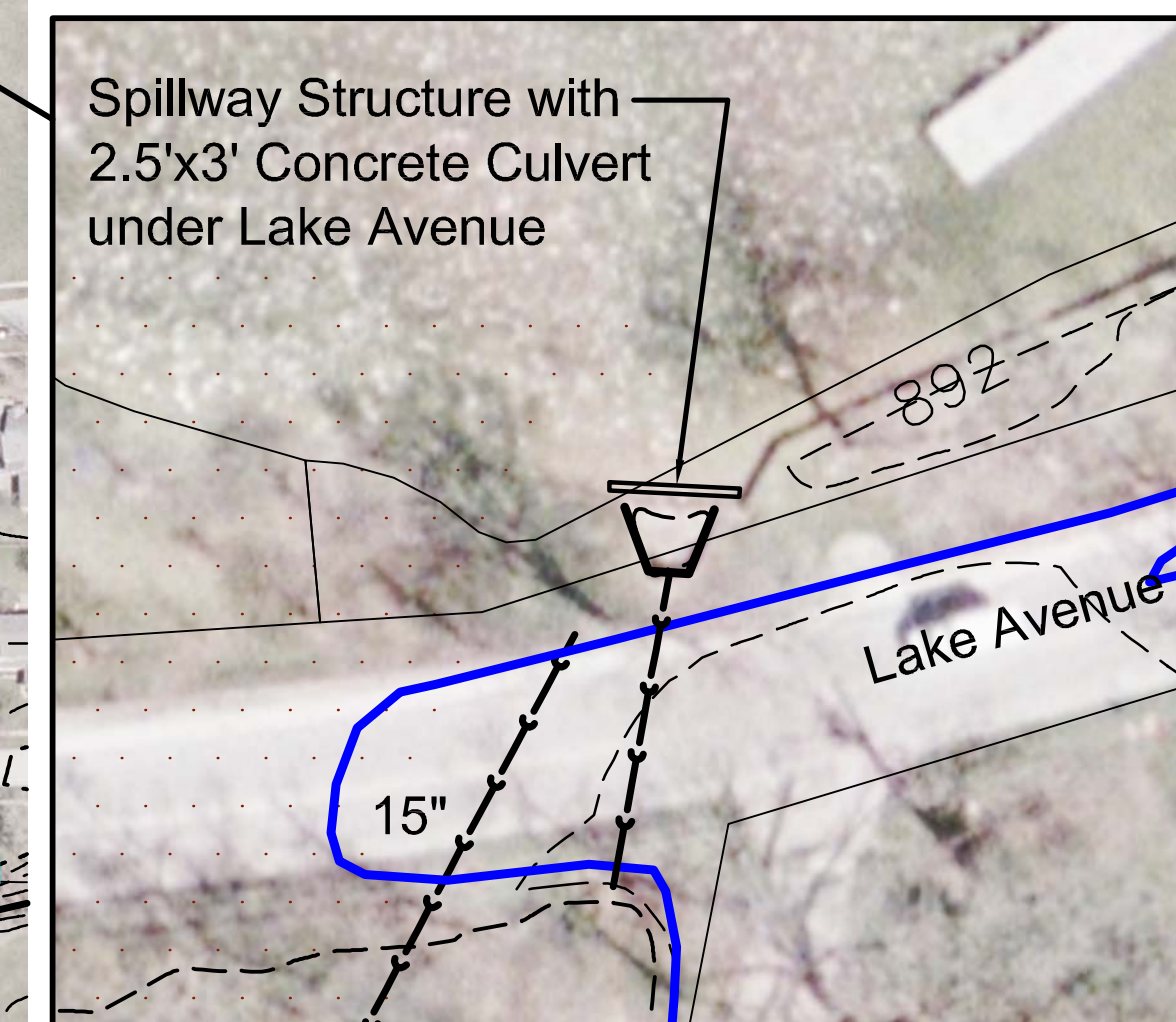
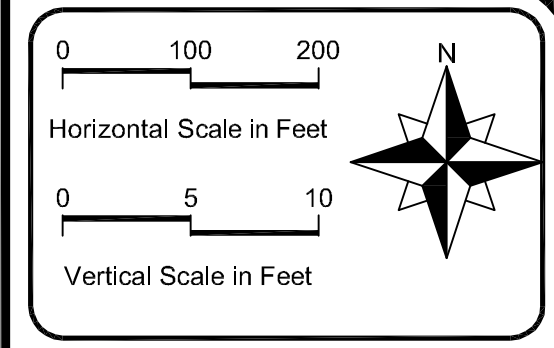


Spillway Photo



Spillway Area



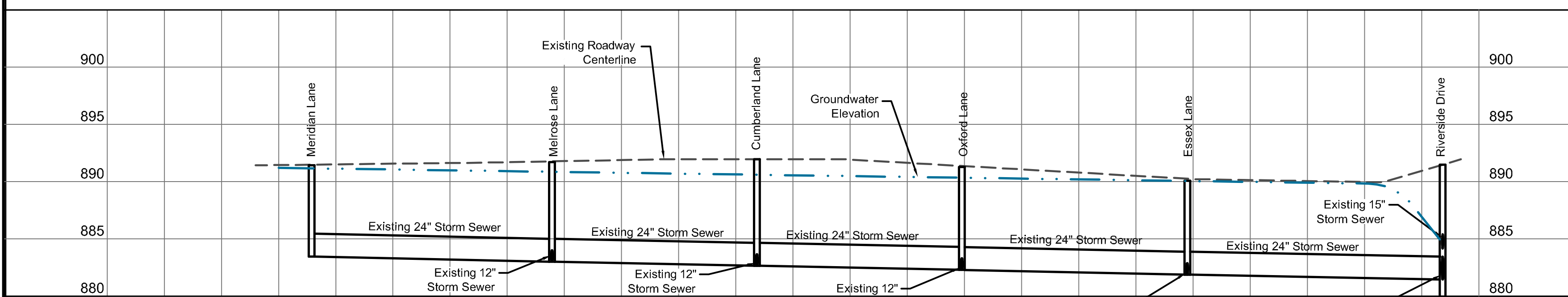
LEGEND

- FEMA Floodplain line
- Existing Contours
- Existing Storm Sewer
- Depressional Area
- Hydic Soils
- ADID Wetlands

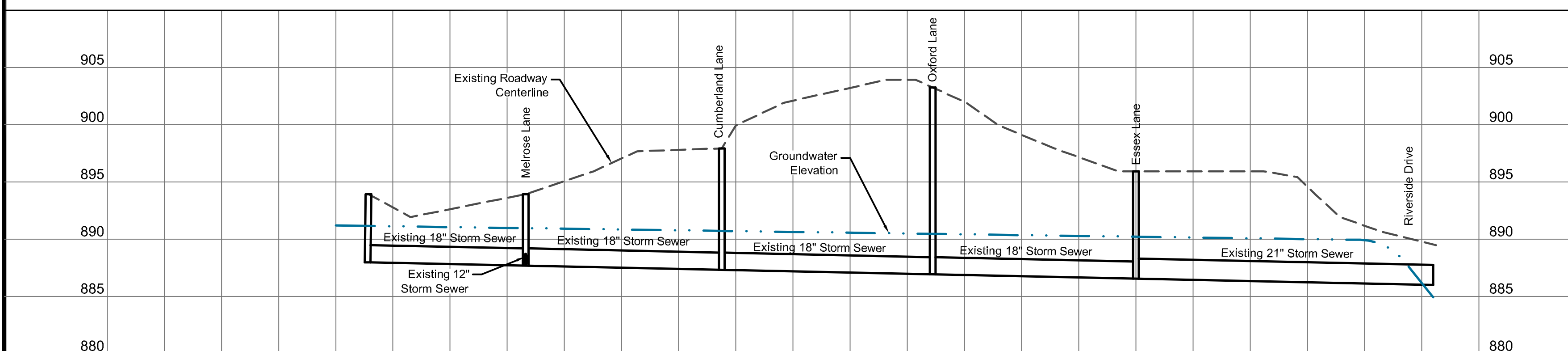
# Crystal Lake Flooding Analysis

August 2007 Conditions

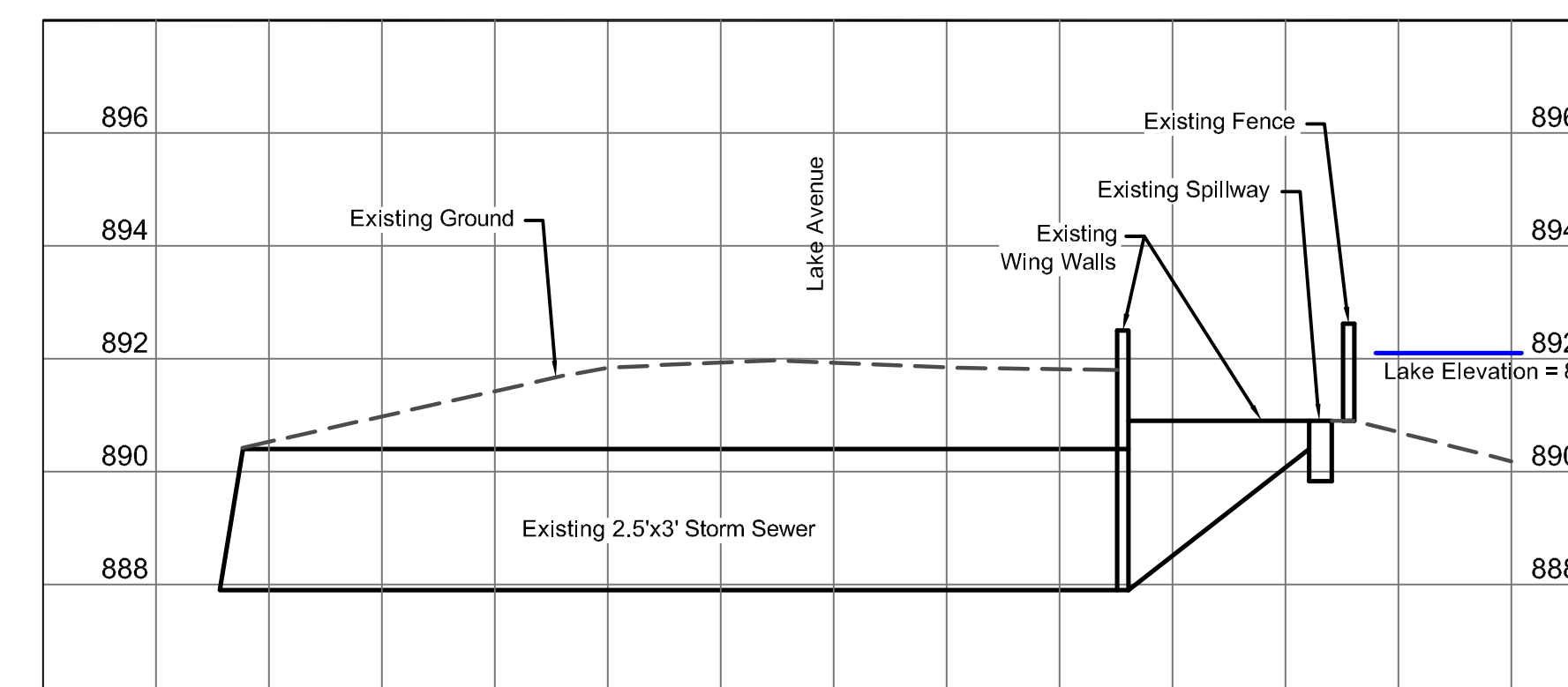
## Flood Complaint Area 4



Broadway Street Profile



Country Club Road Profile



Spillway Cross Section Detail

Hey and Associates, Inc.  
 Water Resources, Wetlands and Ecology  
 26575 WEST COMMERCE DRIVE, SUITE 601  
 Volo, ILLINOIS 60073  
 OFFICE (847) 740-0888  
 FAX (847) 740-2888  
 Volo@HEYASSOC.COM

PROJECT NO.	08223	EXHIBIT NO.	
DESIGNED BY	GCS		
DRAWN BY	ALC/CFR		
CHECKED BY	GCS		
APPROVED BY	GCS		
REVISION DATE	01/02/2009		