

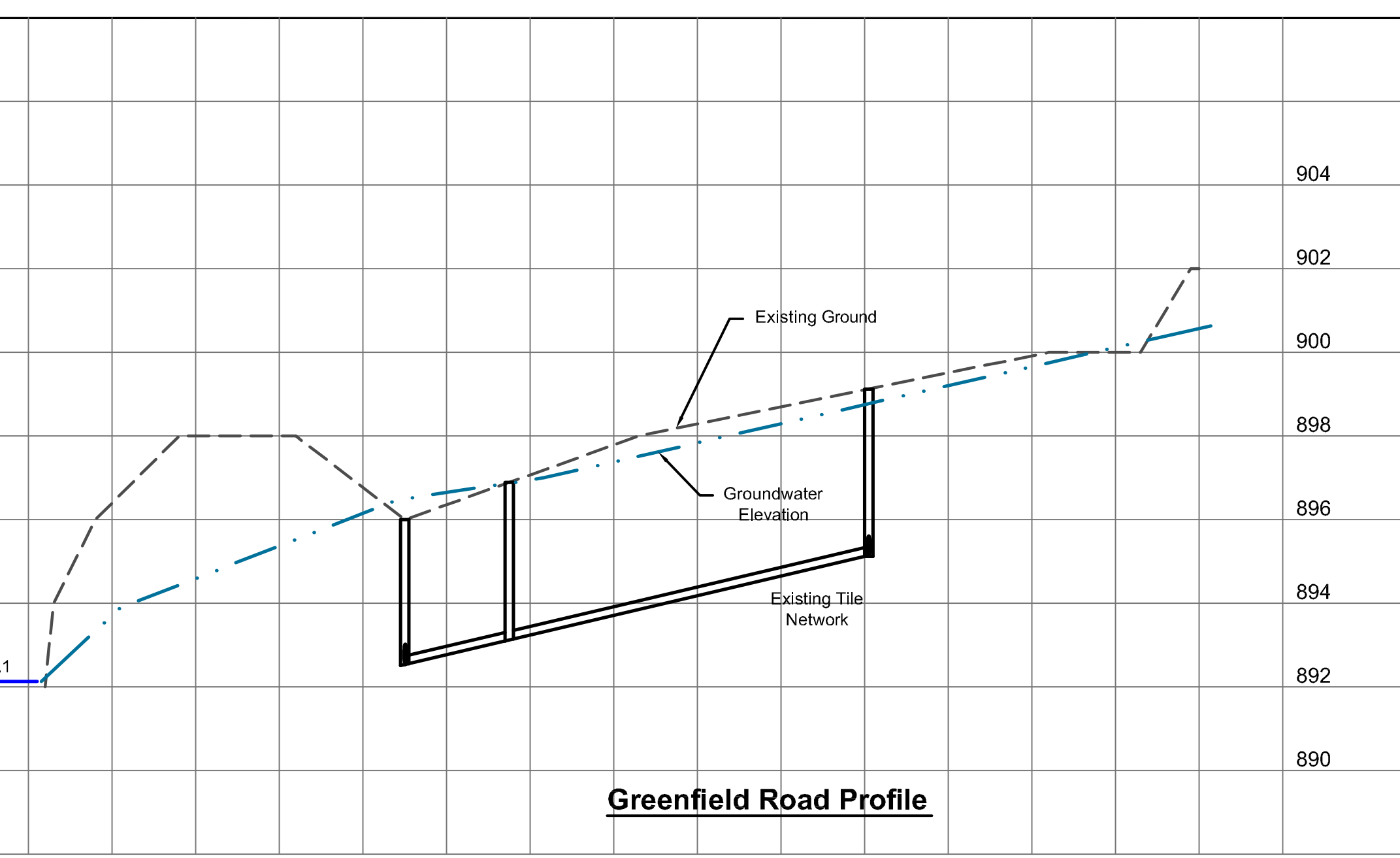
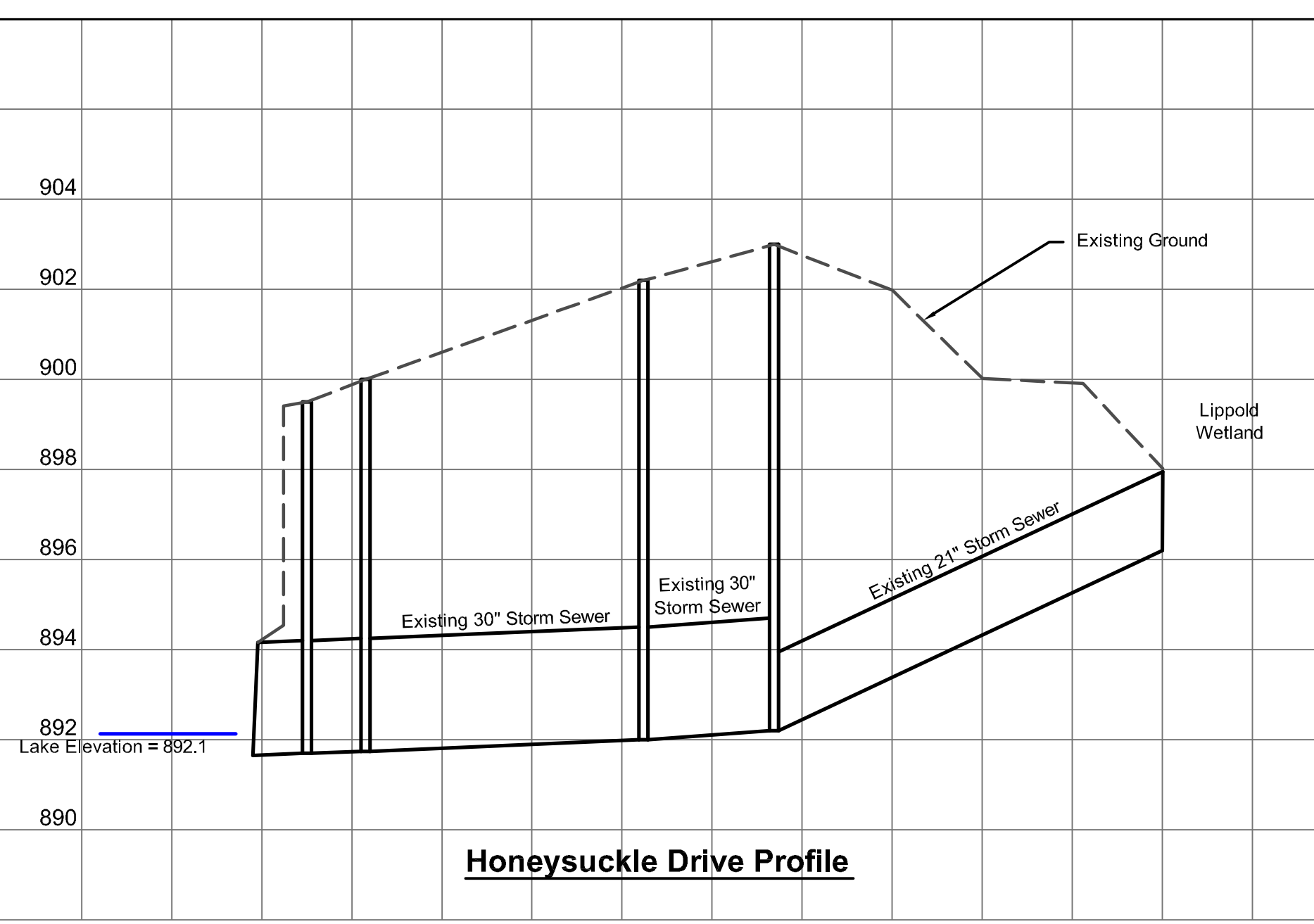
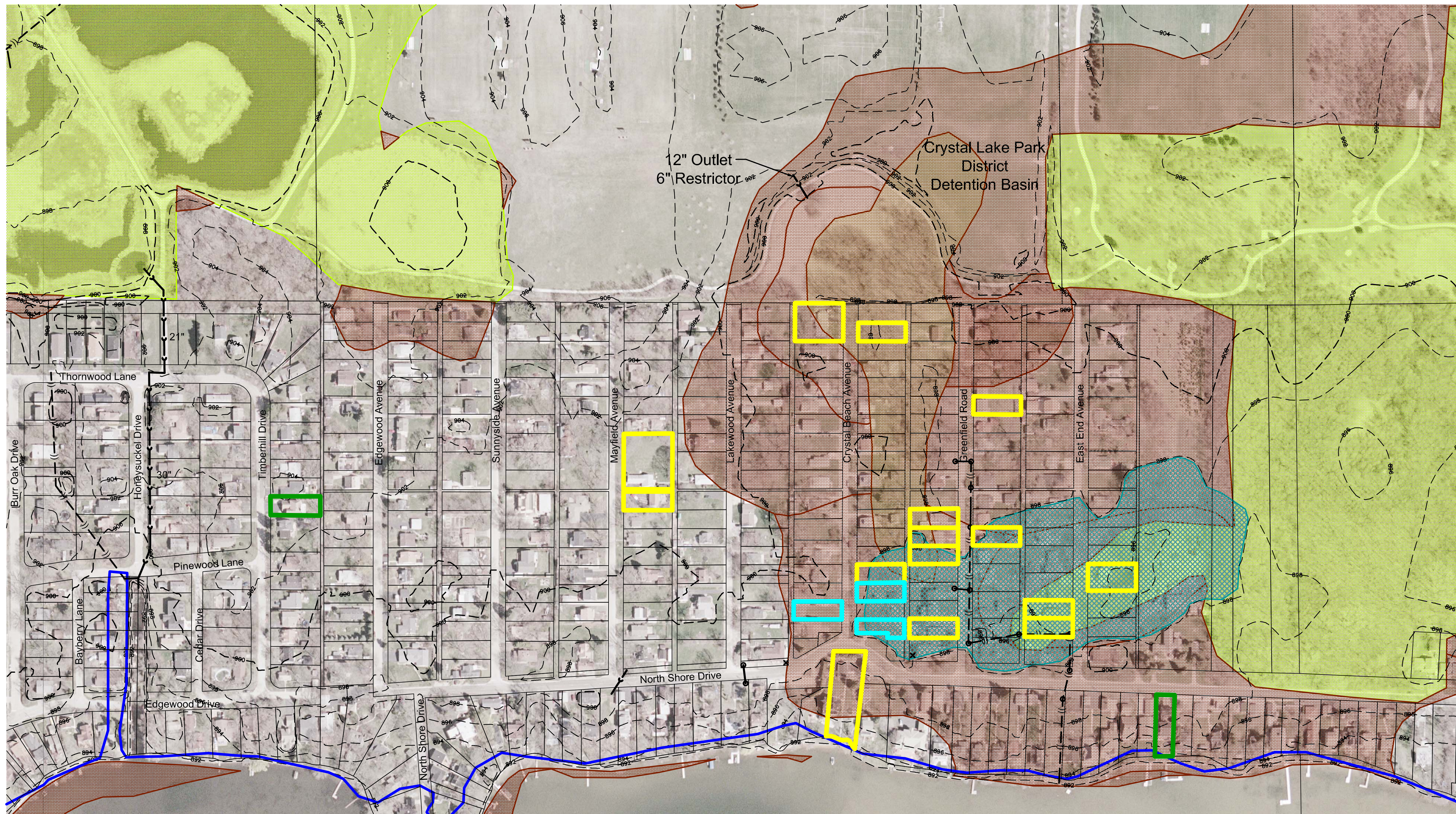
**Crystal Lake
Flooding
Analysis**

**August
2007
Conditions**

**Flood
Complaint
Area 2**

Hey and Associates, Inc.
Water Resources, Wetlands and Ecology
26575 WEST COMMERCE DRIVE, SUITE 601
VOLO, ILLINOIS 60073
OFFICE (847) 740-0888
FAX (847) 740-2888
VOLO@HEYASSOC.COM

PROJECT NO.	08223	EXHIBIT NO.	10
DESIGNED BY	GCS		
DRAWN BY	ALC/CFR		
CHECKED BY	GCS		
APPROVED BY	GCS		
REVISION DATE	01/02/2009		



Copyright © 2009 Hey and Associates, Inc.