



"Never doubt that a small group of thoughtful, committed citizens can change the world. Indeed, it is the only thing that ever has."

- Margaret Mead





Welcome!

Board of Directors

Kevin Ivers, President, Woodstock
Brad Semel, Vice-President, McHenry
Kimberly Becker, Treasurer, Gurnee
Ray Eisbrener, Secretary, Richmond
Pamela Althoff, McHenry
Dennis Dreher, Bull Valley
Martie Gorman, Huntley
Jim Haisler, Prairie Grove
Elise Livingston, Richmond

Executive Director:

Shawna Flavell

Phone: 815.354.1374

Email:

sflavell@mchenryconservation.org

Conservation District or Foundation?



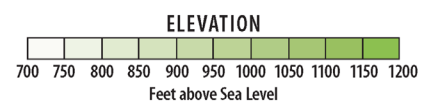
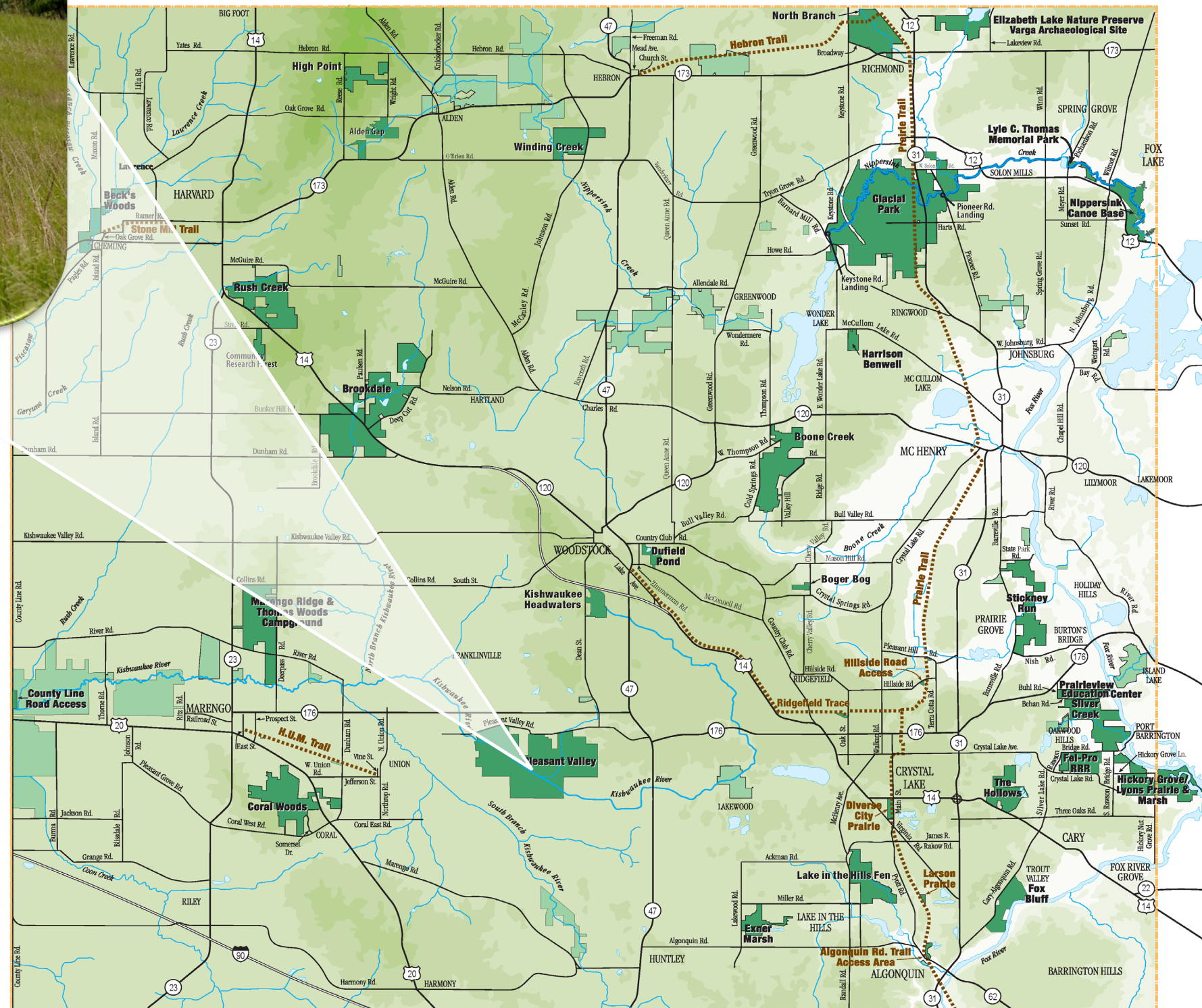
The McHenry County Conservation District exists to preserve, restore and manage natural areas and open spaces for their intrinsic value and for the benefits to present and future generations.



The McHenry County Conservation Foundation supports, sustains, and advances the public conservation, education, and recreation programs of the McHenry County Conservation District and its partners.



Conservation District Sites



- 25,623 Acres
- Thirty-Five Sites
- Hundreds of Recreational Opportunities
- More than 600,000 visitors per month



Since 1999, contributions have allowed the McHenry County Conservation Foundation to secure over \$4.5 million in support of conservation, recreation, and environmental education. In addition, the Foundation's work on two successful Open Space Bond Referendums provided \$141.5 million in funds to purchase open space for public benefit.



Our Supporters

Play a key role engaging the community in the protection and management of the prairies, wetlands, woodlands, and natural resources of McHenry County.



Photos by Lora Petrak

“The Wildflower Preservation and Propagation Committee (WPPC) educates the public on the benefits of native plants and advocates for their inclusion in landscapes and habitats throughout the area. Since the McHenry County Conservation District properties showcase a wonderful variety of native habitats, it was an easy decision for the WPPC to donate trees and shrubs to the Foundation for the public to enjoy at Glacial Park.”

~H.M. Hepperlin, WPPC Member

Land & Habitat Restoration

Restore and maintain our public lands and natural areas as high quality habitat through volunteer efforts and the direct purchase of necessary equipment and supplies



RECENT EXAMPLES

- Big Woods Tree Plantings Across the County
- Nippersink Creek Mussel Reintroduction
- Free Seed Community Nursery at High Point Conservation Area in Harvard
- Prairie Restoration in Bison Enclosure at Pleasant Valley Conservation Area in Woodstock



Environmental Education

Inspire the next generation of conservationists and environmental advocates by supporting Conservation District-hosted trainings and environmental education opportunities for children and adults

RECENT EXAMPLES

- Partnership with Youth and Family Center of McHenry County
- Annual Summer Camp Scholarships
- Community Engagement Grant from The Nature Conservancy

Recreation

Connect people to
the wilderness in their
communities by hosting
events and funding
special projects

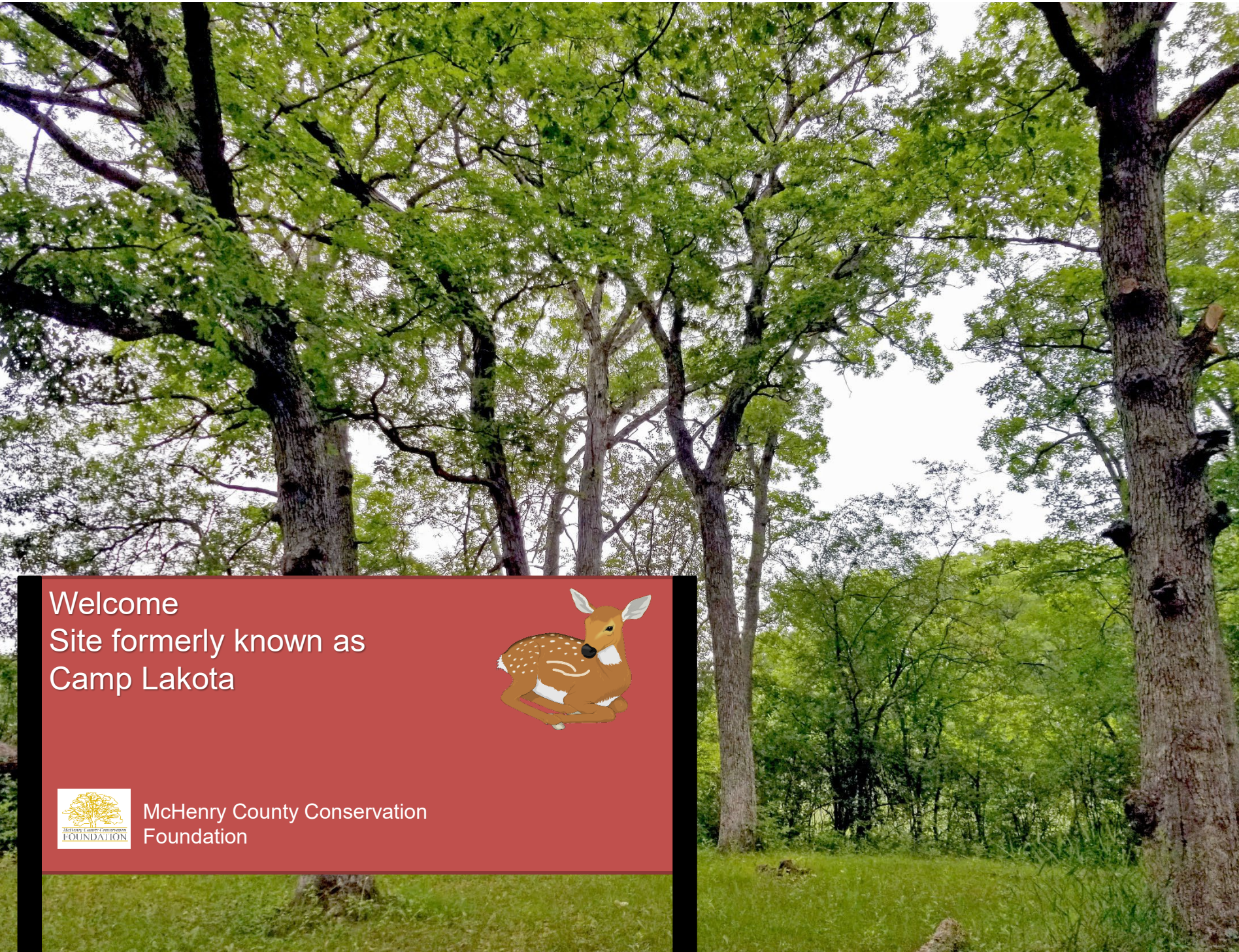


RECENT EXAMPLES

- Pedal, Paddle, Saddle
- Hunter Safety App
- ADA-Accessible Pier, Glacial Park
- ADA-Upgrades to Prairie Trail

Land Protection

Protect quality natural areas through direct land purchase,
when necessary.



Join the Journey



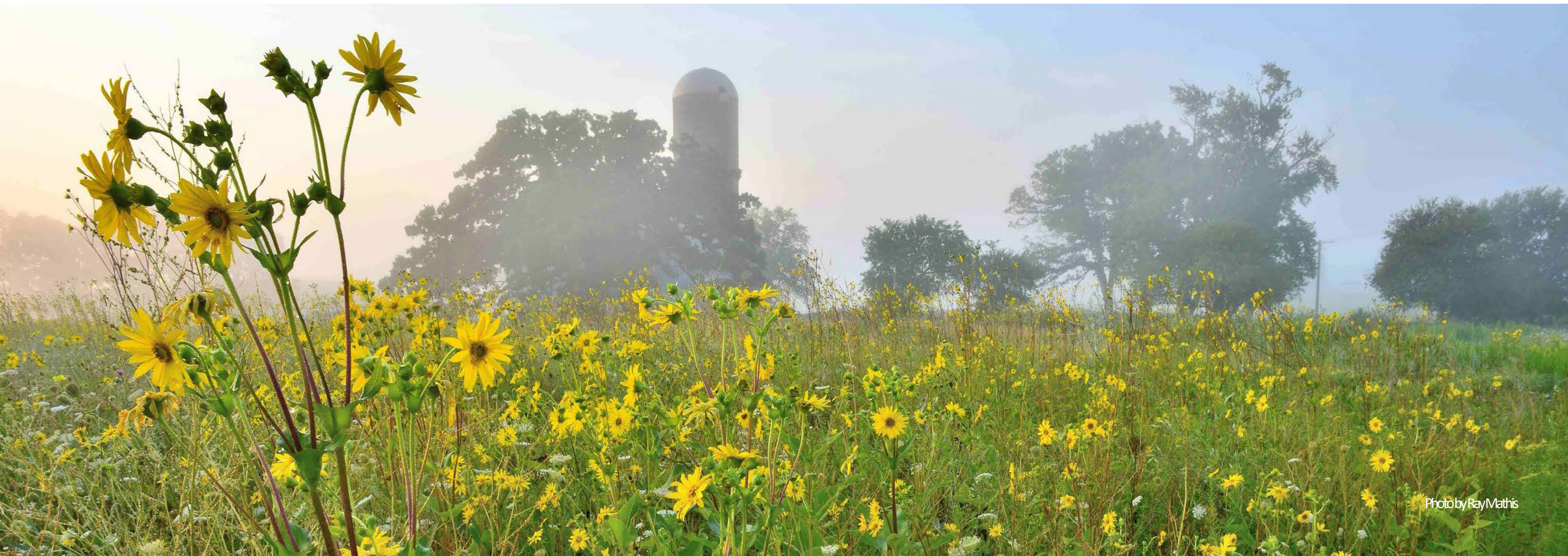
**We can't do this
work without you.**

Together, we ensure
that McHenry County's
public open spaces and
natural resources are
preserved and restored
for years to come.

Join us in helping
sustain our essential
public lands and
treasured
landscapes.

From matching gifts to event sponsorships or community-focused grants, we are excited to partner with local businesses committed to philanthropy and social investments. We are happy to talk through planned or corporate giving goals to make a lasting impact on local conservation efforts.

Donate at McHenryConservation.org





Thank You!

Board of Directors

Kevin Ivers, President, Woodstock
Brad Semel, Vice-President, McHenry
Kimberly Becker, Treasurer, Gurnee
Ray Eisbrener, Secretary, Richmond
Pamela Althoff, McHenry
Dennis Dreher, Bull Valley
Martie Gorman, Huntley
Jim Haisler, Prairie Grove
Elise Livingston, Richmond

Executive Director:

Shawna Flavell

Phone: 815.354.1374

Email:

sflavell@mchenryconservation.org