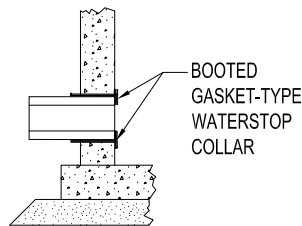


DIAMETER OF WATER MAIN	VAULT SIZE	
	DIAMETER	WALL THICKNESS
4" AND 6"	4 FT.	4"
UP TO 12"	5 FT.	5"
16" AND OVER	6 FT.	6"



**LEGEND:**

- ① CONCENTRIC CONES REQUIRED
- ② 1" (MIN) MUELLER, A.Y. McDONALD, OR FORD NO LEAD CORPORATION STOP EACH SIDE OF VALVE MUST BE A COMPRESSION FITTING.
- ③ MUELLER 2361 OR AMERICAN FLOW CONTROL 2500-1 RESILIENT SEAT GATE VALVE
- ④ WATERTIGHT JOINTS USING EZ-STIK PREMIUM BUTYL SEALANT ASTM C990 OR EQUAL FOR FRAMES ADJUSTING RINGS AND BARREL SECTIONS.
- ⑤ GASKET-TYPE WATERSTOP COLLAR FOR ALL WATER MAIN CONNECTIONS

**NOTES:**

- 1. ALL MANHOLES MUST BE DAMP PROOF PER IDOT SPECIFICATIONS 1060.
- 2. DRAIN FOR VALVE VAULT SHALL BE CONSTRUCTED ONLY WHEN SHOWN ON THE PLANS.
- 3. CAST IRON MANHOLE FRAME & COVER SIMILAR TO NEENAH R-1712, OR EQUAL WITH STANDARD DUTY, NON-ROCKING TYPE LIDS WITH "CITY OF CRYSTAL LAKE WATER" CAST INTO LID. (NEENAH R-2535, OR EQUAL MAY BE USED IN GRASSY AREAS)
- 4. HDPE PLASTIC MANHOLE ADJUSTING RINGS CONFORMING TO THE REQUIREMENTS OF HS26 OF THE AASHTO STANDARD SPECIFICATIONS AND ASTM D1248-84. ALL ADJUSTING RINGS SHALL BE STABILIZED AGAINST ULTRA VIOLET LIGHT. ADJUSTING RING HEIGHT NOT TO EXCEED 8" WITH A MAXIMUM OF THREE (3) ADJUSTMENT RINGS. THE ANNULAR SPACE BETWEEN RINGS AND CONE BASIN, THE RINGS AND THE RINGS COVER FRAME SHALL BE SEALED UTILIZING AND APPROVED BUTYL SEALANT. ALL ADJUSTMENT FOR MATCHING ROAD GRADE SHALL BE MADE UTILIZING A MOLDED AND INDEXED SLOPE RING.
- 5. ALL UNDERGROUND NUTS, BOLTS & WASHERS MUST BE STAINLESS STEEL.
- 6. VALVE VAULT REQUIRED FOR WATER SERVICES GREATER THAN OR EQUAL TO 4". SEE VAULT SIZE TABLE.
- 7. STEPS WITHIN VAULT TO BE REMOVED PRIOR TO CITY ACCEPTANCE.

Revised:
1. 06/12/2015
2. 08/18/2023 - JRG 1" CORP AND STEPS REMOVED
3.
4.

Drawing Name
<b>STANDARD VALVE VAULT</b>

Drawing Number
<b>UW-01</b>
Date: 05/29/2015
Drawn      Checked
JH          VR

