

OFFICIAL ZONING MAP 2024

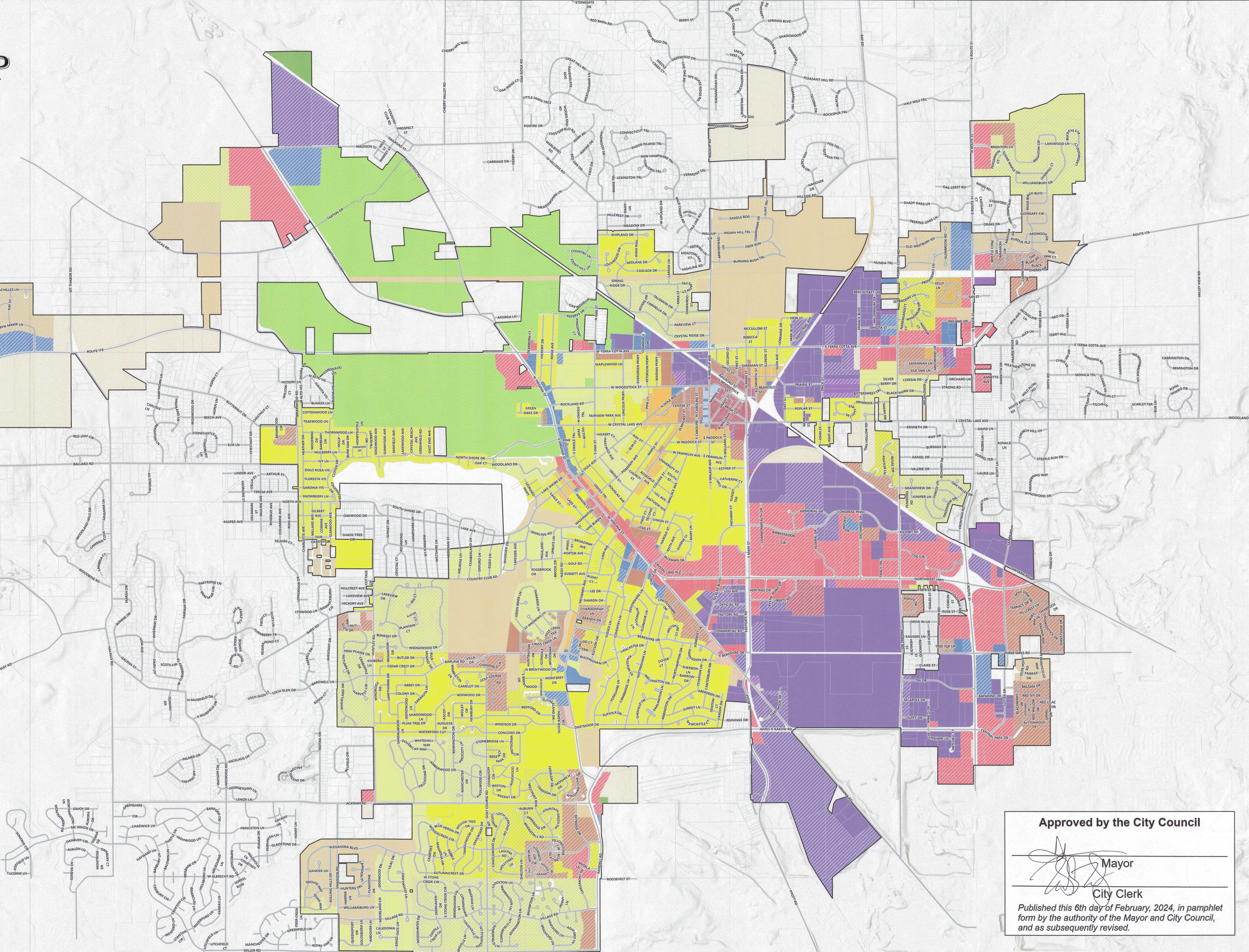
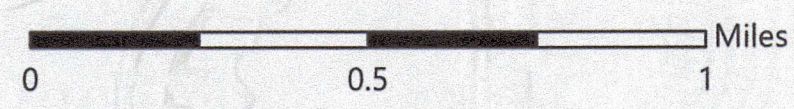
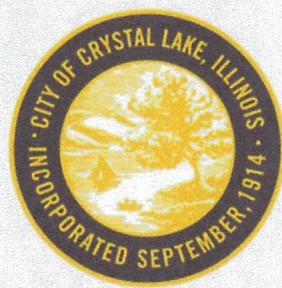
City of Crystal Lake, Illinois

Zoning Code & Description

	B-1	Neighborhood Business
	B-1 PUD	Neighborhood Business (PUD)
	B-2	General Commercial
	B-2 PUD	General Commercial (PUD)
	B-4	Mixed-Use Business
	B-4 PUD	Mixed-Use Business (PUD)
	M	Manufacturing
	M PUD	Manufacturing (PUD)
	M-L	Manufacturing Limited
	M-L PUD	Manufacturing Limited (PUD)
	O	Office
	O PUD	Office (PUD)
	R-1	Single-Family Residential
	R-1 PUD	Single-Family Residential (PUD)
	R-2	Single-Family Residential
	R-2 PUD	Single-Family Residential (PUD)
	R-3A	Two-Family Residential
	R-3A PUD	Two-Family Residential (PUD)
	R-3B	Multifamily
	R-3B PUD	Multifamily (PUD)
	R-O	Residential Office
	RE	Residential Estate
	RE PUD	Residential Estate (PUD)
	E	Estate
	E PUD	Estate (PUD)
	F	Farming
	W	Watershed
	COUNTY	County Zoning

Legend

	City Limits
	Tax Parcel
	Lake or Pond
	Street Centerline



Approved by the City Council

Mayor

City Clerk

Published this 6th day of February, 2024, in pamphlet form by the authority of the Mayor and City Council, and as subsequently revised.