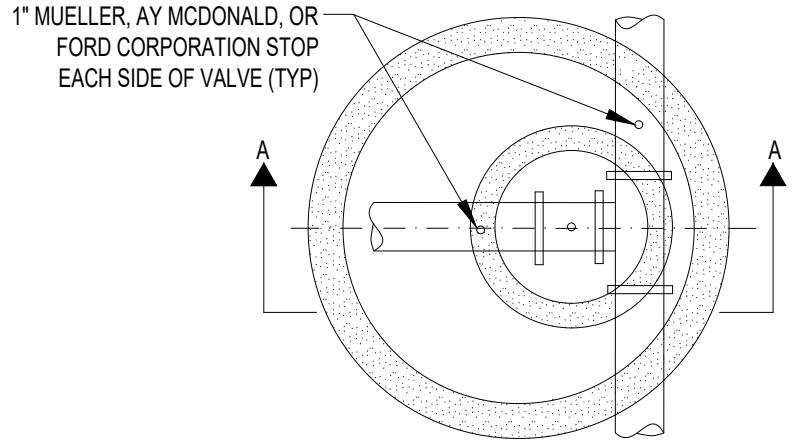


SECTION A-A



PLAN VIEW

NOTES:

1. ALL UNDERGROUND MUST BE STAINLESS STEEL NUTS, BOLTS AND WASHERS.
2. MUELLER T-2360-16 OR AMERICAN FLOW CONTROL SERIES 2500-1 TAPPING VALVE
3. STAINLESS STEEL SMITH BLAIR "665", CASCADE "CST-EX", *ROMAC INDUSTRIES "SST", OR FORD "FTSS" TAPPING SLEEVE
4. SEE UW-01 FOR STANDARD VAULT VALVE

* DUCTILE IRON FLANGE AND M.J. OUTLET NOT APPROVED FOR USE W/ROMAC SST

| |
|--------------------------------------|
| Revised: |
| 1. 06/12/2015 |
| 2. KL 1-25-2021 1" CORPORATION STOPS |
| 3. |
| 4. |

Drawing Name

WATER MAIN PRESSURE CONNECTION

| | |
|----------------|------------|
| Drawing Number | UW-02 |
| Date: | 05/29/2015 |
| Drawn | Checked |
| JH | VR |



City of
Crystal Lake
Illinois