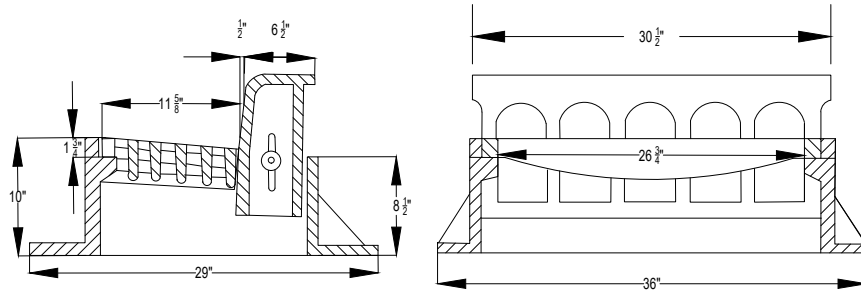


BARRIER CURB

NEENAH FOUNDRY COMPANY: R-3281-A

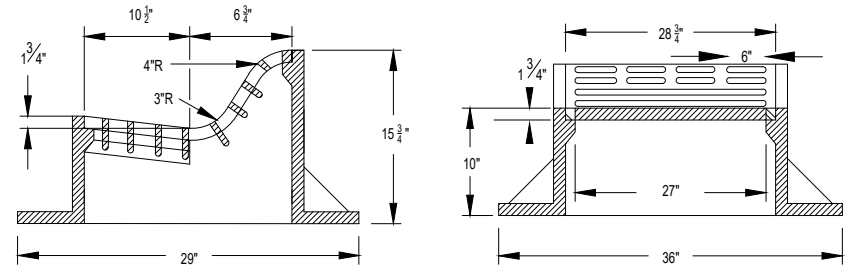
EJIW: 7210Z2 / T2 / M1 SET



M6.12 MOUNTABLE CURB

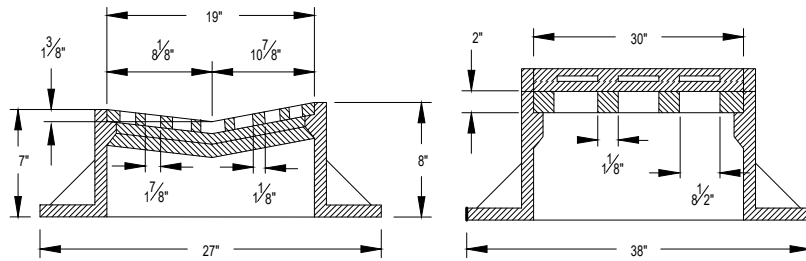
NEENAH FOUNDRY COMPANY: R-3503-B

EJIW: 7180Z / M1 SET



DEPRESSED CURB

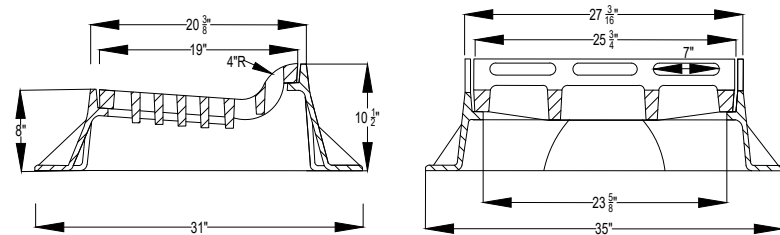
NEENAH FOUNDRY COMPANY: R-3511



M4.12 MOUNTABLE CURB

NEENAH FOUNDRY COMPANY: R-3501-P

EJIW: 7250Z / 7250M GRATE



CITY REQUIREMENTS

- 1) CONCRETE MUST BE POURED A MINIMUM OF 6" AROUND THE CIRCUMFERENCE OF THE FRAME AND AT LEAST 6" BELOW THE FRAME TO ENSURE THAT THERE WILL BE NO INFILTRATION BETWEEN THE FRAME AND STRUCTURE.
- 2) FRAMES SHALL BE SET IN LINE WITH THE EDGE OF PAVEMENT.

Revised:
1. 06/12/2015
2. 01/25/2021 KL ADDED R-3281-A, R-3503-B, AND R3501-P
3.
4.

Drawing Name
CURB INLET FRAME AND GRATE

Drawing Number
UD-02a
Date: 5/28/2015
Drawn Checked
JH AW



City of
Crystal Lake
Illinois